

# ZDHHC1 Antibody



PACO48022

---

## Product Information

**Size:**

50ug

**Reactivity:**

Human, Mouse

**Source:**

Rabbit

**Isotype:**

IgG

**Applications:**

ELISA, WB, IHC, IF

**Recommended dilutions:**

ELISA:1:2000-1:10000, WB:1:1000-1:5000,  
IHC:1:20-1:200, IF:1:50-1:200

**Protein Background:**

endoplasmic reticulum, extracellular exosome, DNA binding, palmitoyltransferase activity, protein palmitoylation.

**Gene ID:**

ZDHHC1

**Uniprot**

Q8WTX9

**Synonyms:**

Probable palmitoyltransferase ZDHHC1 (EC 2.3.1.225) (DHHC domain-containing cysteine-rich protein 1) (Zinc finger DHHC domain-containing protein 1) (DHHC-1) (Zinc finger protein 377), ZDHHC1, C16orf1 ZNF377

**Immunogen:**

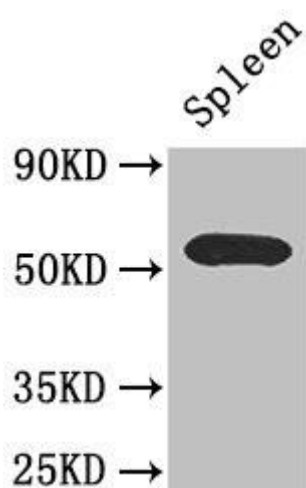
Recombinant Human Probable palmitoyltransferase ZDHHC1 protein (283-389AA).

**Storage:**

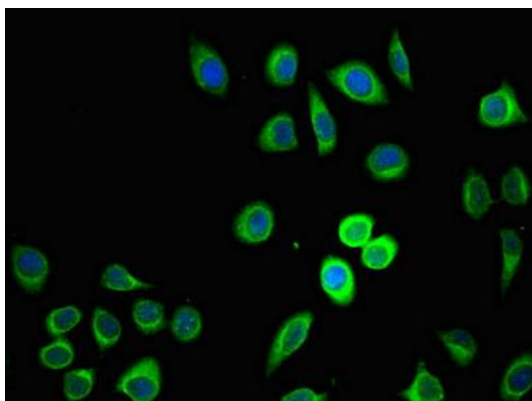
Preservative: 0.03% Proclin 300. Constituents: 50% Glycerol, 0.01M PBS, PH 7.4

## Product Images

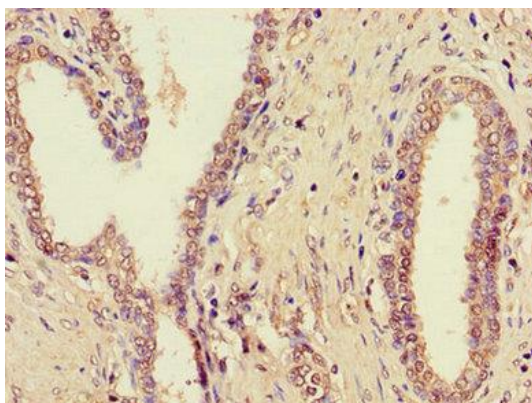
---



Western Blot. Positive WB detected in: Mouse spleen tissue. All lanes: C16orf1 antibody at 2.6 $\mu$ g/ml. Secondary. Goat polyclonal to rabbit IgG at 1/50000 dilution. Predicted band size: 55 kDa. Observed band size: 55 kDa.



Immunofluorescent analysis of A549 cells using PACO48022 at dilution of 1:100 and Alexa Fluor 488-conjugated AffiniPure Goat Anti-Rabbit IgG(H+L).



Immunohistochemistry of paraffin-embedded human prostate cancer using PACO48022 at dilution of 1:100.