

PACO48050

Product Information

Size:

50ug

Reactivity:

Human

Source:

Rabbit

Isotype:

IgG

Applications:

ELISA, IHC, IF

Recommended dilutions:

ELISA:1:2000-1:10000, IHC:1:20-1:200,
IF:1:50-1:200

Protein Background:

Required for mitotic centrosome and spindle assembly. Appears to be a major regulator of pericentriolar material (PCM) recruitment, centrosome maturation, and centriole duplication.

Gene ID:

CEP192

Uniprot

Q8TEP8

Synonyms:

Centrosomal protein of 192 kDa (Cep192), CEP192, KIAA1569

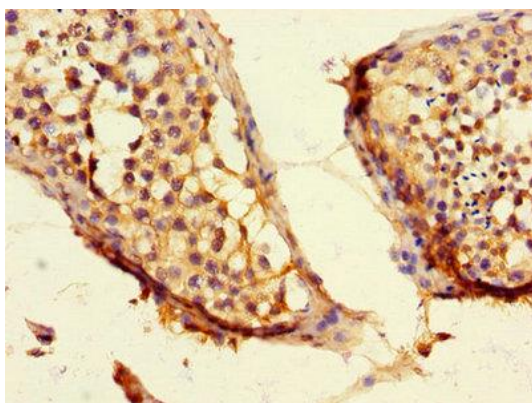
Immunogen:

Recombinant Human Centrosomal protein of 192 kDa protein (447-711AA).

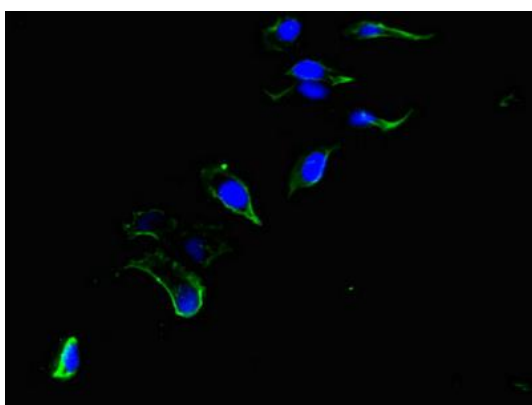
Storage:

Preservative: 0.03% Proclin 300. Constituents: 50% Glycerol, 0.01M PBS, PH 7.4

Product Images



Immunohistochemistry of paraffin-embedded human testis tissue using PACO48050 at dilution of 1:100.



Immunofluorescent analysis of HeLa cells using PACO48050 at dilution of 1:100 and Alexa Fluor 488-conjugated AffiniPure Goat Anti-Rabbit IgG(H+L).