

## Product Information

**Size:**

50ug

**Reactivity:**

Human

**Source:**

Rabbit

**Isotype:**

IgG

**Applications:**

ELISA, IHC

**Recommended dilutions:**

ELISA:1:2000-1:10000, IHC:1:20-1:200

**Protein Background:**

Endonuclease that cooperates with the MRE11-RAD50-NBN (MRN) complex in processing meiotic and mitotic double-strand breaks (DSBs) by ensuring both resection and intrachromosomal association of the broken ends. Functions downstream of the MRN complex and ATM, promotes ATR activation and its recruitment to DSBs in the S/G2 phase facilitating the generation of ssDNA. Component of the BRCA1-RBBP8 complex that regulates CHEK1 activation and controls cell cycle G2/M checkpoints on DNA damage. Promotes microhomology-mediated alternative end joining (A-NHEJ) during class-switch recombination and plays an essential role in chromosomal translocations.

**Gene ID:**

RBBP8

**Uniprot**

Q99708

**Synonyms:**

DNA endonuclease RBBP8 (EC 3.1) (CtBP-interacting protein) (CtIP) (Retinoblastoma-binding protein 8) (RBBP-8) (Retinoblastoma-interacting protein and myosin-like) (RIM) (Sporulation in the absence of SPO11 protein 2 homolog) (SAE2), RBBP8, CTIP

**Immunogen:**

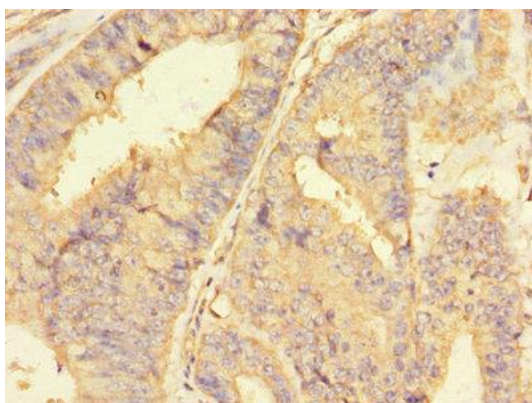
Recombinant Human DNA endonuclease RBBP8 protein (126-331AA).

**Storage:**

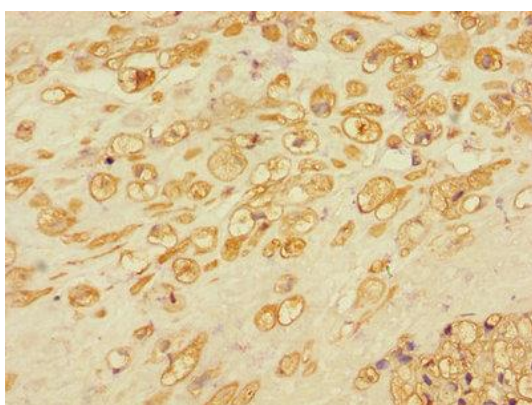
Preservative: 0.03% Proclin 300. Constituents: 50% Glycerol, 0.01M PBS, PH 7.4

## Product Images

---



Immunohistochemistry of paraffin-embedded human endometrial cancer using PACO48070 at dilution of 1:100.



Immunohistochemistry of paraffin-embedded human placental tissue using PACO48070 at dilution of 1:100.