

SLC29A1 Antibody



PACO48074

Product Information

Size:

50ug

Reactivity:

Human, Mouse

Source:

Rabbit

Isotype:

IgG

Applications:

ELISA, WB, IHC, IF

Recommended dilutions:

ELISA:1:2000-1:10000, WB:1:2000-1:5000,
IHC:1:20-1:200, IF:1:50-1:200

Protein Background:

Mediates both influx and efflux of nucleosides across the membrane (equilibrative transporter). It is sensitive (ES) to low concentrations of the inhibitor nitrobenzylmercaptapurine riboside (NBMPR) and is sodium-independent. It has a higher affinity for adenosine. Inhibited by dipyridamole and dilazep (anticancer chemotherapeutics drugs).

Gene ID:

SLC29A1

Uniprot

Q99808

Synonyms:

Equilibrative nucleoside transporter 1 (Equilibrative nitrobenzylmercaptapurine riboside-sensitive nucleoside transporter) (Equilibrative NBMPR-sensitive nucleoside transporter) (Nucleoside transporter, es-type) (Solute carrier family 29 member 1), SLC29A1, ENT1

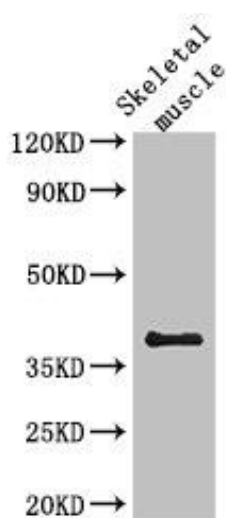
Immunogen:

Recombinant Human Equilibrative nucleoside transporter 1 protein (228-291AA).

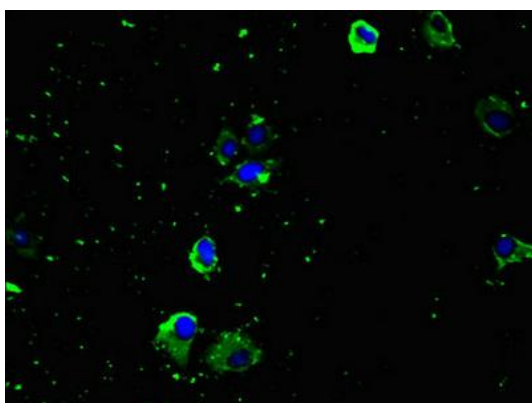
Storage:

Preservative: 0.03% Proclin 300. Constituents: 50% Glycerol, 0.01M PBS, PH 7.4

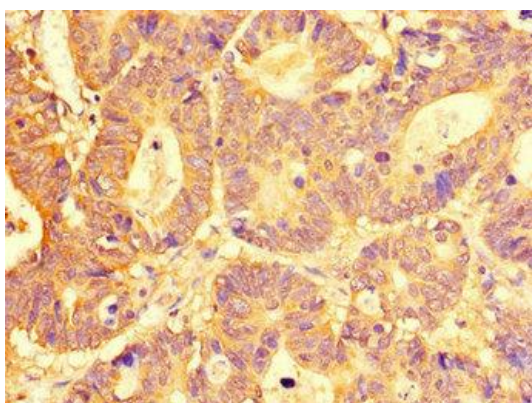
Product Images



Western Blot. Positive WB detected in: Mouse skeletal muscle tissue. All lanes: KIR2DL3 antibody at 2.7 μ g/ml. Secondary. Goat polyclonal to rabbit IgG at 1/50000 dilution. Predicted band size: 51, 59 kDa. Observed band size: 38 kDa.



Immunofluorescent analysis of U251 cells using PACO48074 at dilution of 1:100 and Alexa Fluor 488-conjugated AffiniPure Goat Anti-Rabbit IgG(H+L).



Immunohistochemistry of paraffin-embedded human colon cancer using PACO48074 at dilution of 1:100.