

PARD6G Antibody



PACO48094

Product Information

Size:

50ug

Reactivity:

Human, Mouse

Source:

Rabbit

Isotype:

IgG

Applications:

ELISA, WB, IF

Recommended dilutions:

ELISA:1:2000-1:10000, WB:1:2000-1:5000,
IF:1:50-1:200

Protein Background:

Adapter protein involved in asymmetrical cell division and cell polarization processes. May play a role in the formation of epithelial tight junctions. The PARD6-PARD3 complex links GTP-bound Rho small GTPases to atypical protein kinase C proteins.

Gene ID:

PARD6G

Uniprot

Q9BYG4

Synonyms:

Partitioning defective 6 homolog gamma (PAR-6 gamma) (PAR6D), PARD6G, PAR6G

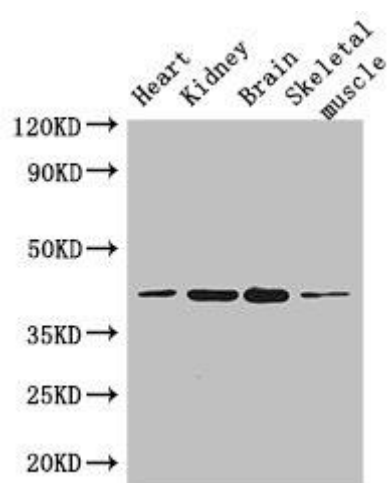
Immunogen:

Recombinant Human Partitioning defective 6 homolog γ protein (249-326AA).

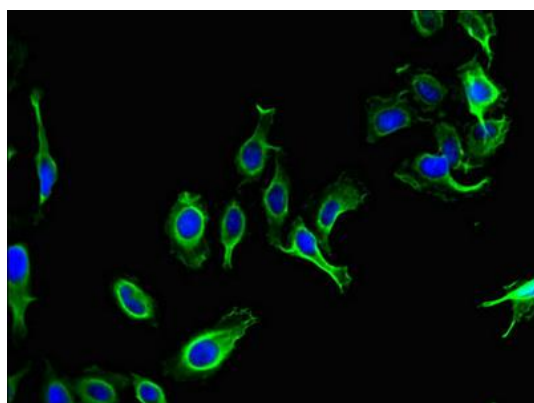
Storage:

Preservative: 0.03% Proclin 300. Constituents: 50% Glycerol, 0.01M PBS, PH 7.4

Product Images



Western Blot. Positive WB detected in: Mouse heart tissue, Mouse kidney tissue, Mouse brain tissue, Mouse skeletal muscle tissue. All lanes: PARD6G antibody at 3.4 μ g/ml. Secondary. Goat polyclonal to rabbit IgG at 1/50000 dilution. Predicted band size: 41, 13 kDa. Observed band size: 41 kDa.



Immunofluorescent analysis of HeLa cells using PACO48094 at dilution of 1:100 and Alexa Fluor 488-conjugated AffiniPure Goat Anti-Rabbit IgG(H+L).