

PGAP2 Antibody



PACO48142

Product Information

Size:

50ug

Reactivity:

Human

Source:

Rabbit

Isotype:

IgG

Applications:

ELISA, IHC, IF

Recommended dilutions:

ELISA:1:2000-1:10000, IHC:1:20-1:200,
IF:1:50-1:200

Protein Background:

Involved in the lipid remodeling steps of GPI-anchor maturation. Required for stable expression of GPI-anchored proteins at the cell surface.

Gene ID:

PGAP2

Uniprot

Q9UHQ9

Synonyms:

Post-GPI attachment to proteins factor 2 (FGF receptor-activating protein 1), PGAP2, FRAG1

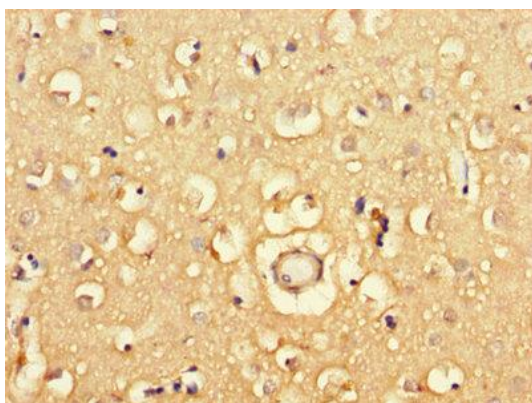
Immunogen:

Recombinant Human Post-GPI attachment to proteins factor 2 protein (45-114AA).

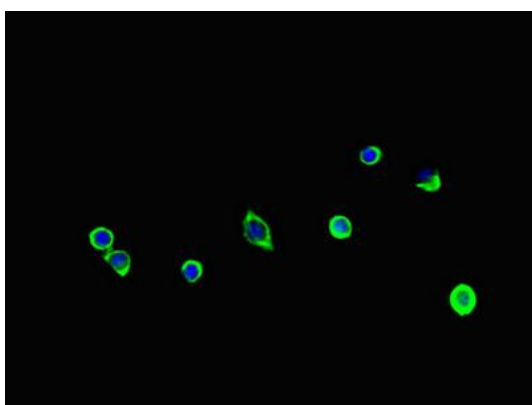
Storage:

Preservative: 0.03% Proclin 300. Constituents: 50% Glycerol, 0.01M PBS, PH 7.4

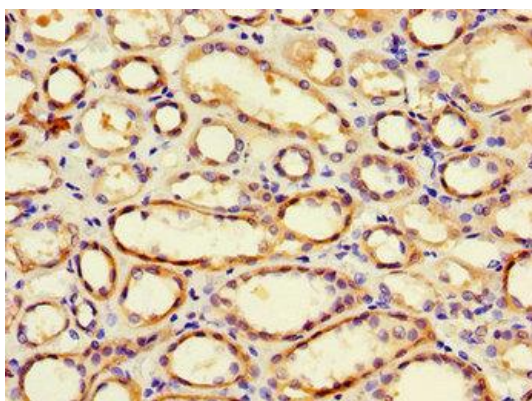
Product Images



Immunohistochemistry of paraffin-embedded human brain tissue using PACO48142 at dilution of 1:100.



Immunofluorescent analysis of MCF-7 cells using PACO48142 at dilution of 1:100 and Alexa Fluor 488-conjugated AffiniPure Goat Anti-Rabbit IgG(H+L).



Immunohistochemistry of paraffin-embedded human kidney tissue using PACO48142 at dilution of 1:100.