

Product Information

Size:

50ug

Reactivity:

Human

Source:

Rabbit

Isotype:

IgG

Applications:

ELISA, IF

Recommended dilutions:

ELISA:1:2000-1:10000, IF:1:20-1:200

Protein Background:

Acts as a transcriptional coregulator, that can have both coactivator and corepressor functions. Inhibits the DCSTAMP-repressive activity of TAL1, hence enhancing the access of the transcription factor MITF to the DC-STAMP promoter in osteoclast. Plays a role in bone homeostasis; required as a positive regulator in TNFSF11//RANKL-mediated osteoclast fusion via a DCSTAMP-dependent pathway. May also be required in the regulation of osteoblast differentiation. Involved in the transcriptional corepression of NF-kappaB in macrophages. Plays a role as a regulator in the proinflammatory cascade.

Gene ID:

SBNO2

Uniprot

Q9Y2G9

Synonyms:

Protein strawberry notch homolog 2, SBNO2, KIAA0963

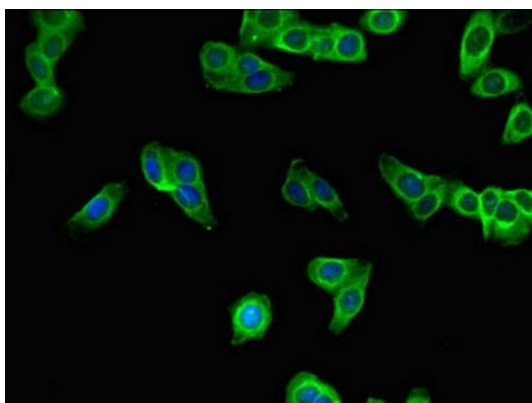
Immunogen:

Recombinant Human Protein strawberry notch homolog 2 protein (6-146AA).

Storage:

Preservative: 0.03% Proclin 300. Constituents: 50% Glycerol, 0.01M PBS, PH 7.4

Product Images



Immunofluorescent analysis of HepG2 cells using PACO48186 at dilution of 1:100 and Alexa Fluor 488-conjugated AffiniPure Goat Anti-Rabbit IgG(H+L).