

CD151 Antibody



PACO48270

Product Information

Size:

50ug

Reactivity:

Human, Mouse

Source:

Rabbit

Isotype:

IgG

Applications:

ELISA, WB, IHC, IF

Recommended dilutions:

ELISA:1:2000-1:10000, WB:1:500-1:5000,
IHC:1:20-1:200, IF:1:50-1:200

Protein Background:

Essential for the proper assembly of the glomerular and tubular basement membranes in kidney.

Gene ID:

CD151

Uniprot

P48509

Synonyms:

CD151 antigen (GP27) (Membrane glycoprotein SFA-1) (Platelet-endothelial tetraspan antigen 3) (PETA-3) (Tetraspanin-24) (Tspan-24) (CD antigen CD151), CD151, TSPAN24

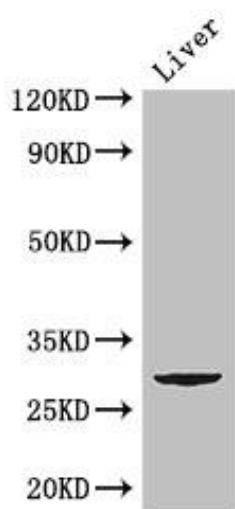
Immunogen:

Recombinant Human CD151 antigen protein (125-199AA).

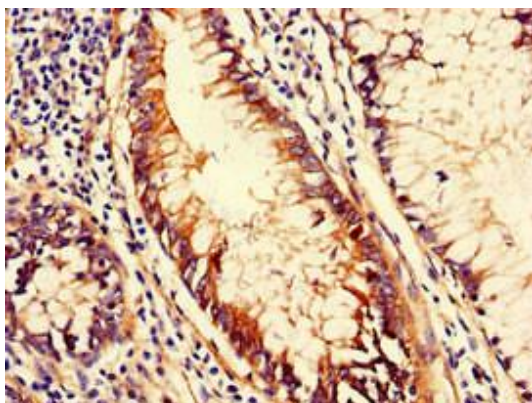
Storage:

Preservative: 0.03% Proclin 300. Constituents: 50% Glycerol, 0.01M PBS, PH 7.4

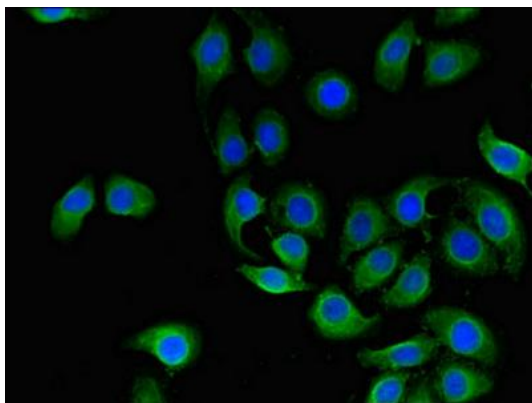
Product Images



Western Blot. Positive WB detected in: Mouse liver tissue. All lanes: CD151 antibody at 2.8 μ g/ml. Secondary. Goat polyclonal to rabbit IgG at 1/50000 dilution. Predicted band size: 29 kDa. Observed band size: 29 kDa.



Immunohistochemistry of paraffin-embedded human colon cancer using PACO48270 at dilution of 1:100.



Immunofluorescent analysis of A549 cells using PACO48270 at dilution of 1:100 and Alexa Fluor 488-conjugated AffiniPure Goat Anti-Rabbit IgG(H+L).