

PACO48278

Product Information

Size:

50ug

Reactivity:

Human, Mouse

Source:

Rabbit

Isotype:

IgG

Applications:

ELISA, WB, IF

Recommended dilutions:

ELISA:1:2000-1:10000, WB:1:2000-1:10000,
IF:1:50-1:200

Protein Background:

Cadherins are calcium-dependent cell adhesion proteins. They preferentially interact with themselves in a homophilic manner in connecting cells; cadherins may thus contribute to the sorting of heterogeneous cell types. Acts as a regulator of neural stem cells quiescence by mediating anchorage of neural stem cells to ependymocytes in the adult subependymal zone: upon cleavage by MMP24, CDH2-mediated anchorage is affected, leading to modulate neural stem cell quiescence. CDH2 may be involved in neuronal recognition mechanism. In hippocampal neurons, may regulate dendritic spine density.

Gene ID:

CDH2

Uniprot

P19022

Synonyms:

Cadherin-2 (CDw325) (Neural cadherin) (N-cadherin) (CD antigen CD325), CDH2, CDHN, NCAD

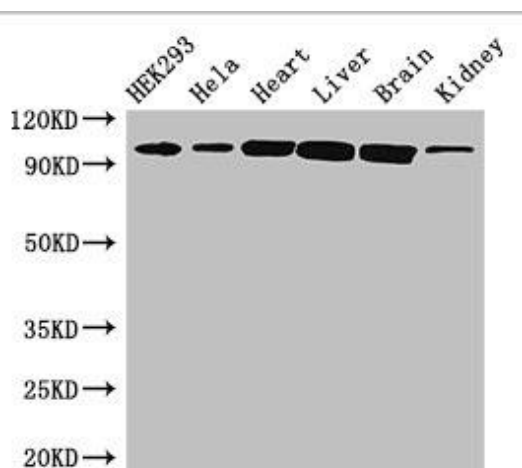
Immunogen:

Recombinant Human Cadherin-2 protein (746-906AA).

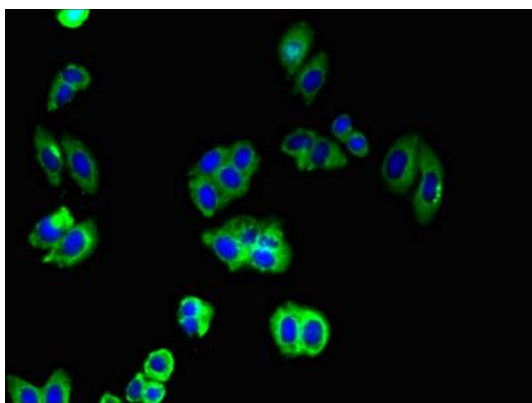
Storage:

Preservative: 0.03% Proclin 300. Constituents: 50% Glycerol, 0.01M PBS, PH 7.4

Product Images



Western Blot. Positive WB detected in: HEK293 whole cell lysate, HeLa whole cell lysate, Mouse heart tissue, Mouse liver tissue, Mouse brain tissue, Mouse kidney tissue. All lanes: CDH2 antibody at 3 μ g/ml. Secondary. Goat polyclonal to rabbit IgG at 1/50000 dilution. Predicted band size: 100, 98 kDa. Observed band size: 100 kDa.



Immunofluorescent analysis of HepG2 cells using PACO48278 at dilution of 1:100 and Alexa Fluor 488-conjugated AffiniPure Goat Anti-Rabbit IgG(H+L).