

CORO1A Antibody



PACO48302

Product Information

Size:

50ug

Reactivity:

Human, Mouse

Source:

Rabbit

Isotype:

IgG

Applications:

ELISA, WB, IHC, IF

Recommended dilutions:

ELISA:1:2000-1:10000, WB:1:500-1:5000,
IHC:1:20-1:200, IF:1:50-1:200

Protein Background:

May be a crucial component of the cytoskeleton of highly motile cells, functioning both in the invagination of large pieces of plasma membrane, as well as in forming protrusions of the plasma membrane involved in cell locomotion. In mycobacteria-infected cells, its retention on the phagosomal membrane prevents fusion between phagosomes and lysosomes.

Gene ID:

CORO1A

Uniprot

P31146

Synonyms:

Coronin-1A (Coronin-like protein A) (Clipin-A) (Coronin-like protein p57) (Tryptophan aspartate-containing coat protein) (TACO), CORO1A, CORO1

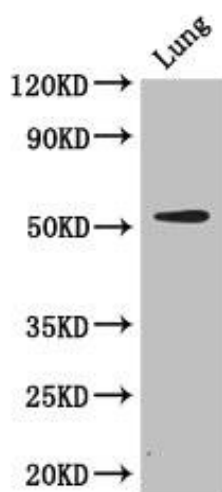
Immunogen:

Recombinant Human Coronin-1A protein (363-432AA).

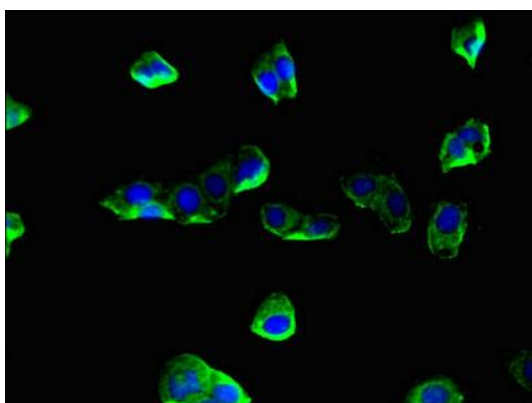
Storage:

Preservative: 0.03% Proclin 300. Constituents: 50% Glycerol, 0.01M PBS, PH 7.4

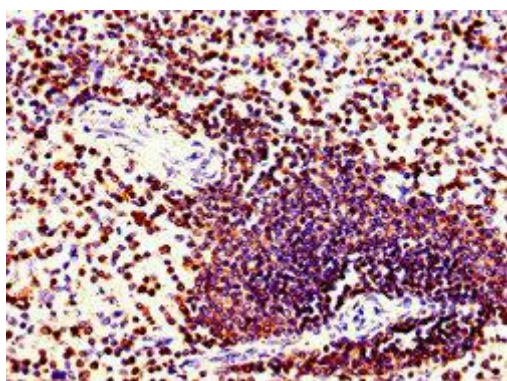
Product Images



Western Blot. Positive WB detected in: Mouse lung tissue. All lanes: CORO1A antibody at 2.7 μ g/ml. Secondary. Goat polyclonal to rabbit IgG at 1/50000 dilution. Predicted band size: 52 kDa. Observed band size: 52 kDa.



Immunofluorescent analysis of HepG2 cells using PACO48302 at dilution of 1:100 and Alexa Fluor 488-conjugated AffiniPure Goat Anti-Rabbit IgG(H+L).



Immunohistochemistry of paraffin-embedded human spleen tissue using PACO48302 at dilution of 1:100.