

# MT-ND1 Antibody



PACO48402

---

## Product Information

**Size:**

50ug

**Reactivity:**

Human, Mouse

**Source:**

Rabbit

**Isotype:**

IgG

**Applications:**

ELISA, WB, IHC

**Recommended dilutions:**

ELISA:1:2000-1:10000, WB:1:500-1:5000,  
IHC:1:20-1:200

**Protein Background:**

Core subunit of the mitochondrial membrane respiratory chain NADH dehydrogenase (Complex I) that is believed to belong to the minimal assembly required for catalysis. Complex I functions in the transfer of electrons from NADH to the respiratory chain. The immediate electron acceptor for the enzyme is believed to be ubiquinone.

**Gene ID:**

MT-ND1

**Uniprot**

P03886

**Synonyms:**

NADH-ubiquinone oxidoreductase chain 1 (EC 1.6.5.3) (NADH dehydrogenase subunit 1), MT-ND1, MTND1 NADH1 ND1

**Immunogen:**

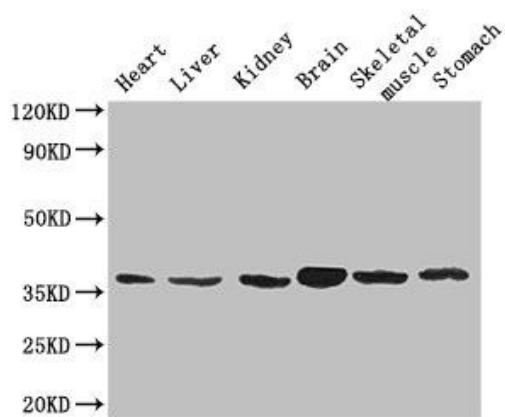
Recombinant Human NADH-ubiquinone oxidoreductase chain 1 protein (23-67AA).

**Storage:**

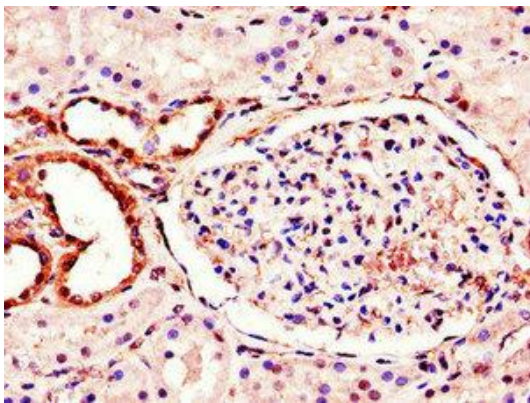
Preservative: 0.03% Proclin 300. Constituents: 50% Glycerol, 0.01M PBS, PH 7.4

## Product Images

---



Western Blot. Positive WB detected in: Mouse heart tissue, Mouse liver tissue, Mouse kidney tissue, Mouse brain tissue, Mouse skeletal muscle tissue, Mouse stomach tissue. All lanes: MTND1 antibody at 3 $\mu$ g/ml. Secondary. Goat polyclonal to rabbit IgG at 1/50000 dilution. Predicted band size: 36 kDa. Observed band size: 36 kDa.



Immunohistochemistry of paraffin-embedded human kidney tissue using PACO48402 at dilution of 1:100.