

MYBL2 Antibody



PACO48410

Product Information

Size:

50ug

Reactivity:

Human

Source:

Rabbit

Isotype:

IgG

Applications:

ELISA, IHC, IF

Recommended dilutions:

ELISA:1:2000-1:10000, IHC:1:20-1:200,
IF:1:50-1:200

Protein Background:

Transcription factor involved in the regulation of cell survival, proliferation, and differentiation. Transactivates the expression of the CLU gene.

Gene ID:

MYBL2

Uniprot

P10244

Synonyms:

Myb-related protein B (B-Myb) (Myb-like protein 2), MYBL2, BMYB

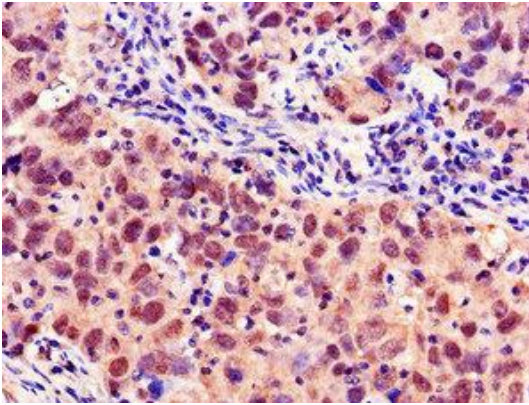
Immunogen:

Recombinant Human Myb-related protein B protein (188-366AA).

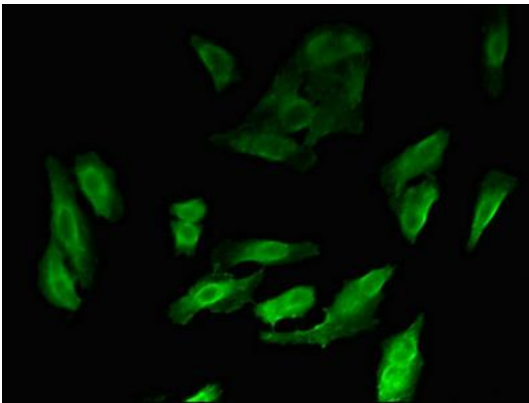
Storage:

Preservative: 0.03% Proclin 300. Constituents: 50% Glycerol, 0.01M PBS, PH 7.4

Product Images



Immunohistochemistry of paraffin-embedded human pancreatic cancer using PACO48410 at dilution of 1:100.



Immunofluorescent analysis of HeLa cells using PACO48410 at dilution of 1:100 and Alexa Fluor 488-conjugated AffiniPure Goat Anti-Rabbit IgG(H+L).