

SLC6A3 Antibody



PACO48470

Product Information

Size:

50ug

Reactivity:

Human, Mouse

Source:

Rabbit

Isotype:

IgG

Applications:

ELISA, WB, IF

Recommended dilutions:

ELISA:1:2000-1:10000, WB:1:2000-1:10000,
IF:1:50-1:200

Protein Background:

Amine transporter. Terminates the action of dopamine by its high affinity sodium-dependent reuptake into presynaptic terminals.

Gene ID:

SLC6A3

Uniprot

Q01959

Synonyms:

Sodium-dependent dopamine transporter (DA transporter) (DAT) (Solute carrier family 6 member 3), SLC6A3, DAT1

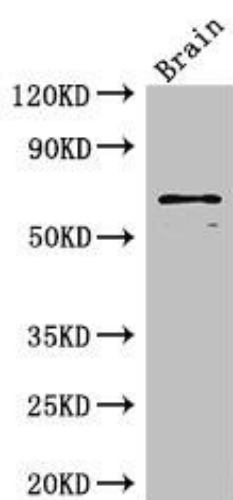
Immunogen:

Recombinant Human Sodium-dependent dopamine transporter protein (161-237AA).

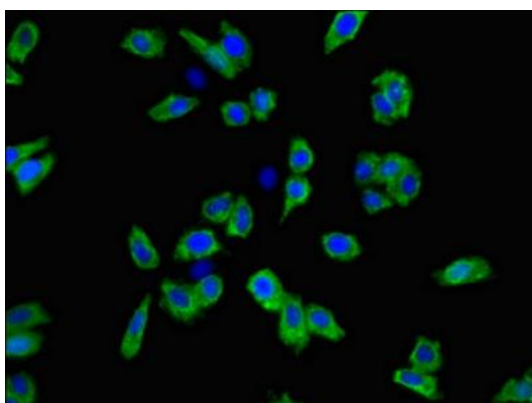
Storage:

Preservative: 0.03% Proclin 300. Constituents: 50% Glycerol, 0.01M PBS, PH 7.4

Product Images



Western Blot. Positive WB detected in: Mouse brain tissue. All lanes: SLC6A3 antibody at 3 μ g/ml. Secondary. Goat polyclonal to rabbit IgG at 1/50000 dilution. Predicted band size: 69 kDa. Observed band size: 69 kDa.



Immunofluorescent analysis of HepG2 cells using PACO48470 at dilution of 1:100 and Alexa Fluor 488-conjugated AffiniPure Goat Anti-Rabbit IgG(H+L).