

LEPR Antibody



PACO48514

Product Information

Size:

50ug

Reactivity:

Human

Source:

Rabbit

Isotype:

IgG

Applications:

ELISA, IF

Recommended dilutions:

ELISA:1:2000-1:10000, IF:1:50-1:200

Protein Background:**Gene ID:**

LEPR

Uniprot

P48357

Synonyms:

Leptin receptor (LEP-R) (HuB219) (OB receptor) (OB-R) (CD antigen CD295), LEPR, DB OBR

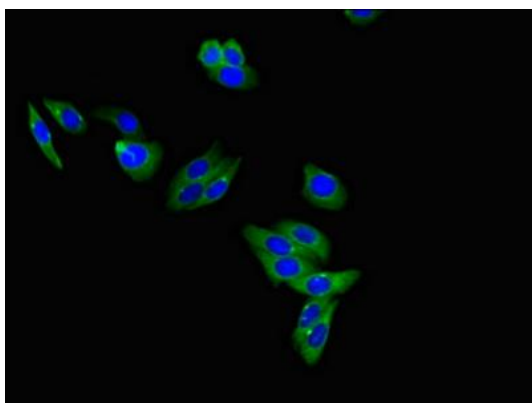
Immunogen:

Recombinant Human Leptin receptor protein (874-1075AA).

Storage:

Preservative: 0.03% Proclin 300. Constituents: 50% Glycerol, 0.01M PBS, PH 7.4

Product Images



Immunofluorescent analysis of HepG2 cells using PACO48514 at dilution of 1:100 and Alexa Fluor 488-conjugated AffiniPure Goat Anti-Rabbit IgG(H+L).