

PACO48598

Product Information

Size:

50ug

Reactivity:

Human

Source:

Rabbit

Isotype:

IgG

Applications:

ELISA, IHC, IF

Recommended dilutions:

ELISA:1:2000-1:10000, IHC:1:20-1:200,
IF:1:50-1:200

Protein Background:

Calcium sensor which positively regulates SNARE-dependent fusion of vesicles with membranes. Binds phospholipids in a calcium-dependent manner and may act at the priming stage of fusion by modifying membrane curvature to stimulate fusion. Involved in calcium-triggered exocytosis in chromaffin cells and calcium-dependent spontaneous release of neurotransmitter in absence of action potentials in neuronal cells. Involved both in glucose-stimulated insulin secretion in pancreatic cells and insulin-dependent GLUT4 transport to the plasma membrane in adipocytes.

Gene ID:

DOC2B

Uniprot

Q14184

Synonyms:

Double C2-like domain-containing protein beta (Doc2-beta), DOC2B, DOC2BL

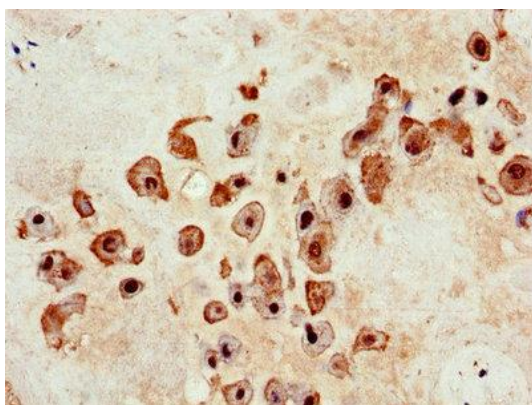
Immunogen:

Recombinant Human Double C2-like domain-containing protein β protein (7-180AA).

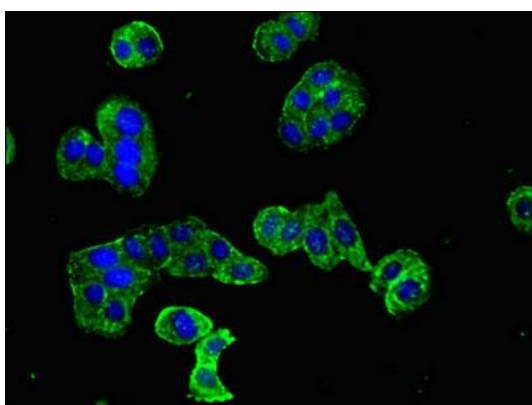
Storage:

Preservative: 0.03% Proclin 300. Constituents: 50% Glycerol, 0.01M PBS, PH 7.4

Product Images



Immunohistochemistry of paraffin-embedded human placenta tissue using PACO48598 at dilution of 1:100.



Immunofluorescent analysis of HepG2 cells using PACO48598 at dilution of 1:100 and Alexa Fluor 488-conjugated AffiniPure Goat Anti-Rabbit IgG(H+L).