

Product Information

Size:

50ug

Reactivity:

Human, Mouse

Source:

Rabbit

Isotype:

IgG

Applications:

ELISA, WB, IHC, IF

Recommended dilutions:

ELISA:1:2000-1:10000, WB:1:500-1:5000,
IHC:1:20-1:200, IF:1:50-1:200

Protein Background:

Regulates clathrin-mediated endocytosis by phosphorylating the AP2M1/mu2 subunit of the adaptor protein complex 2 (AP-2) which ensures high affinity binding of AP-2 to cargo membrane proteins during the initial stages of endocytosis. Isoform 1 and isoform 2 display similar levels of kinase activity towards AP2M1. Regulates phosphorylation of other AP-2 subunits as well as AP-2 localization and AP-2-mediated internalization of ligand complexes. Phosphorylates NUMB and regulates its cellular localization, promoting NUMB localization to endosomes. Binds to and stabilizes the activated form of NOTCH1, increases its localization in endosomes and regulates its transcriptional activity.

Gene ID:

AAK1

Uniprot

Q2M2I8

Synonyms:

AP2-associated protein kinase 1 (EC 2.7.11.1) (Adaptor-associated kinase 1), AAK1, KIAA1048

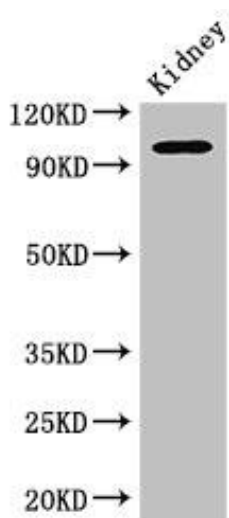
Immunogen:

Recombinant Human AP2-associated protein kinase 1 protein (274-465AA).

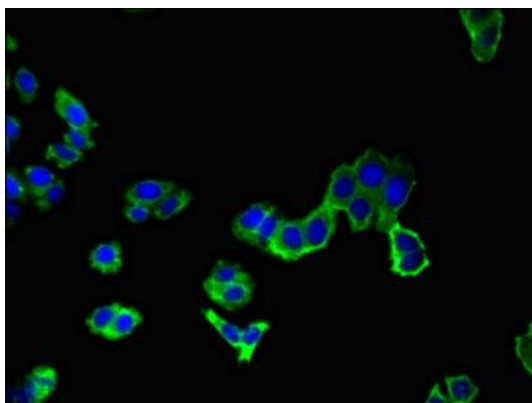
Storage:

Preservative: 0.03% Proclin 300. Constituents: 50% Glycerol, 0.01M PBS, PH 7.4

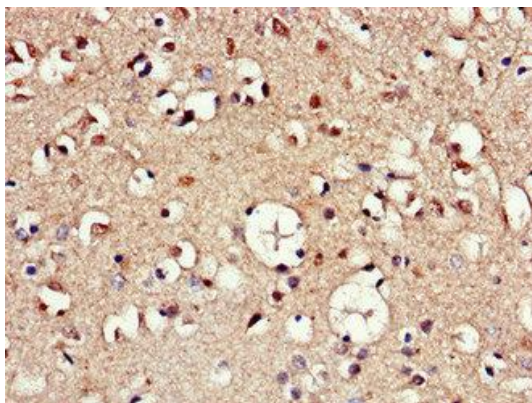
Product Images



Western Blot. Positive WB detected in: Mouse kidney tissue. All lanes: AAK1 antibody at 2.5 μ g/ml. Secondary. Goat polyclonal to rabbit IgG at 1/50000 dilution. Predicted band size: 104, 94 kDa. Observed band size: 104 kDa.



Immunofluorescent analysis of HepG2 cells using PACO48618 at dilution of 1:100 and Alexa Fluor 488-conjugated AffiniPure Goat Anti-Rabbit IgG(H+L).



Immunohistochemistry of paraffin-embedded human brain tissue using PACO48618 at dilution of 1:100.