

# RPL22L1 Antibody



PACO48646

---

## Product Information

**Size:**

50ug

**Reactivity:**

Human

**Source:**

Rabbit

**Isotype:**

IgG

**Applications:**

ELISA, IHC

**Recommended dilutions:**

ELISA:1:2000-1:10000, IHC:1:20-1:200

**Protein Background:**

cytosolic large ribosomal subunit, structural constituent of ribosome, cytoplasmic translation.

**Gene ID:**

RPL22L1

**Uniprot**

Q6P5R6

**Synonyms:**

60S ribosomal protein L22-like 1 (Large ribosomal subunit protein eL22-like 1), RPL22L1

**Immunogen:**

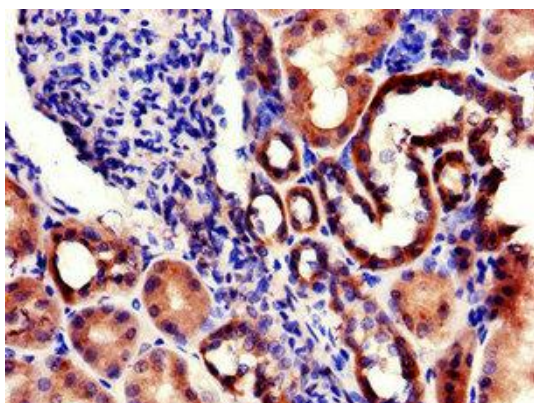
Recombinant Human 60S ribosomal protein L22-like 1 protein (1-122AA).

**Storage:**

Preservative: 0.03% Proclin 300. Constituents: 50% Glycerol, 0.01M PBS, PH 7.4

## Product Images

---



Immunohistochemistry of paraffin-embedded human kidney tissue using PACO48646 at dilution of 1:100.