

FILIP1 Antibody



PACO48674

Product Information

Size:

50ug

Reactivity:

Human

Source:

Rabbit

Isotype:

IgG

Applications:

ELISA, IHC, IF

Recommended dilutions:

ELISA:1:2000-1:10000, IHC:1:20-1:200,
IF:1:50-1:200

Protein Background:

By acting through a filamin-A/F-actin axis, it controls the start of neocortical cell migration from the ventricular zone. May be able to induce the degradation of filamin-A.

Gene ID:

FILIP1

Uniprot

Q7Z7B0

Synonyms:

Filamin-A-interacting protein 1 (FILIP), FILIP1, KIAA1275

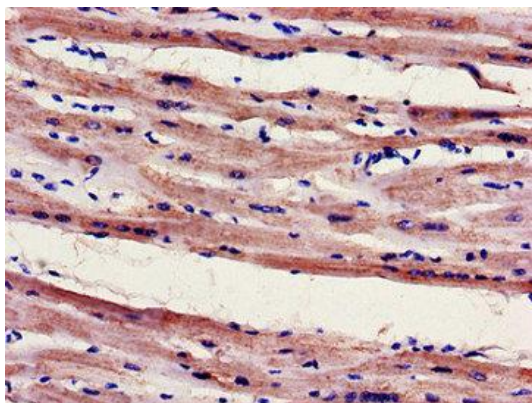
Immunogen:

Recombinant Human Filamin-A-interacting protein 1 protein (957-1192AA).

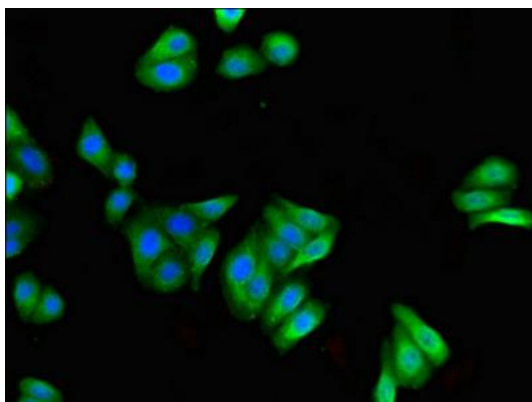
Storage:

Preservative: 0.03% Proclin 300. Constituents: 50% Glycerol, 0.01M PBS, PH 7.4

Product Images



Immunohistochemistry of paraffin-embedded human heart tissue using PACO48674 at dilution of 1:100.



Immunofluorescent analysis of HepG2 cells using PACO48674 at dilution of 1:100 and Alexa Fluor 488-conjugated AffiniPure Goat Anti-Rabbit IgG(H+L).