

PACO48738

Product Information

Size:

50ug

Reactivity:

Human

Source:

Rabbit

Isotype:

IgG

Applications:

ELISA, WB, IF

Recommended dilutions:

ELISA:1:2000-1:10000, WB:1:500-1:2000,
IF:1:50-1:200

Protein Background:

Adapter protein that may provide indirect link between the endocytic membrane traffic and the actin assembly machinery. May regulate the formation of clathrin-coated vesicles (CCPs). Seems to be involved in CCPs maturation including invagination or budding. Involved in endocytosis of integrin beta-1 (ITGB1) and transferrin receptor (TFR). Plays a role in dendrite formation by melanocytes.

Gene ID:

ITSN2

Uniprot

Q9NZM3

Synonyms:

Intersectin-2 (SH3 domain-containing protein 1B) (SH3P18) (SH3P18-like WASP-associated protein), ITSN2, KIAA1256 SH3D1B SWAP

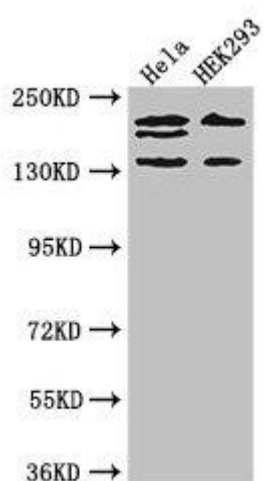
Immunogen:

Recombinant Human Intersectin-2 protein (940-1209AA).

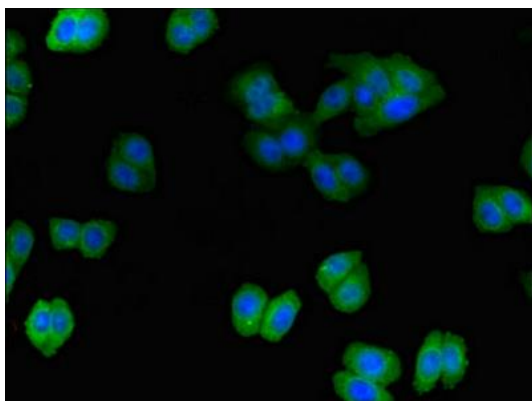
Storage:

Preservative: 0.03% Proclin 300. Constituents: 50% Glycerol, 0.01M PBS, PH 7.4

Product Images



Western Blot. Positive WB detected in: HeLa whole cell lysate, HEK293 whole cell lysate. All lanes: ITSN2 antibody at 4 μ g/ml. Secondary: Goat polyclonal to rabbit IgG at 1/50000 dilution. Predicted band size: 194, 191, 142, 136 kDa. Observed band size: 194, 191, 142 kDa.



Immunofluorescent analysis of HepG2 cells using PACO48738 at dilution of 1:100 and Alexa Fluor 488-conjugated AffiniPure Goat Anti-Rabbit IgG(H+L).