

SLCO1B3 Antibody



PACO48758

Product Information

Size:

50ug

Reactivity:

Human

Source:

Rabbit

Isotype:

IgG

Applications:

ELISA, IHC, IF

Recommended dilutions:

ELISA:1:2000-1:10000, IHC:1:20-1:200,
IF:1:50-1:200

Protein Background:

Mediates the Na(+)-independent uptake of organic anions such as 17-beta-glucuronosyl estradiol, taurocholate, triiodothyronine (T3), leukotriene C4, dehydroepiandrosterone sulfate (DHEAS), methotrexate and sulfobromophthalein (BSP). Involved in the clearance of bile acid, and organic anions from the liver.

Gene ID:

SLCO1B3

Uniprot

Q9NPD5

Synonyms:

Solute carrier organic anion transporter family member 1B3 (Liver-specific organic anion transporter 2) (LST-2) (Organic anion transporter 8) (Organic anion-transporting polypeptide 8) (OATP-8) (Solute carrier family 21 member 8), SLCO1B3, LST2 OATP1B3 OATP8 SLC21A8

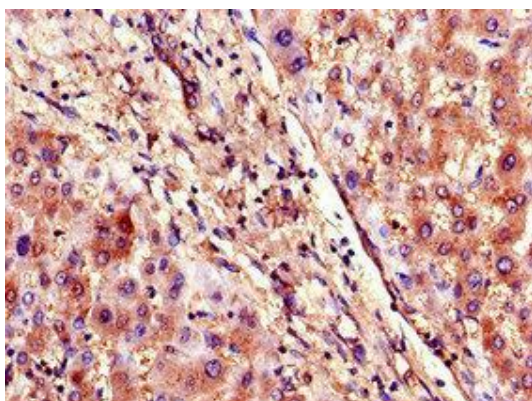
Immunogen:

Recombinant Human Solute carrier organic anion transporter family member 1B3 protein (648-695AA).

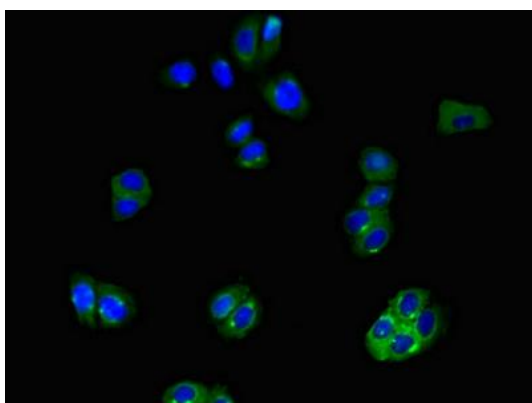
Storage:

Preservative: 0.03% Proclin 300. Constituents: 50% Glycerol, 0.01M PBS, PH 7.4

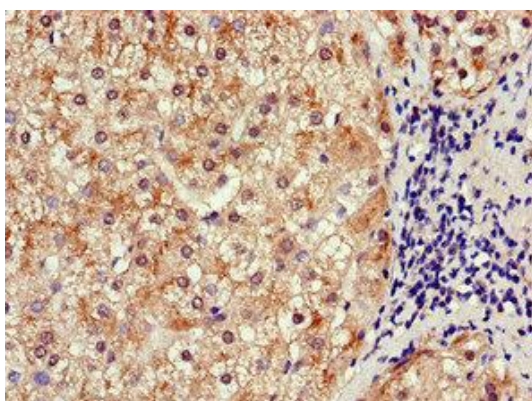
Product Images



Immunohistochemistry of paraffin-embedded human liver tissue using PACO48758 at dilution of 1:100.



Immunofluorescent analysis of HepG2 cells using PACO48758 at dilution of 1:100 and Alexa Fluor 488-conjugated AffiniPure Goat Anti-Rabbit IgG(H+L).



Immunohistochemistry of paraffin-embedded human liver cancer using PACO48758 at dilution of 1:100.