

PACO48782

---

## Product Information

**Size:**

50ug

**Reactivity:**

Human, Mouse

**Source:**

Rabbit

**Isotype:**

IgG

**Applications:**

ELISA, WB, IHC, IF

**Recommended dilutions:**

ELISA:1:2000-1:10000, WB:1:500-1:5000,  
IHC:1:20-1:200, IF:1:50-1:200

**Protein Background:**

Protease that catalyzes two essential functions in the SUMO pathway: processing of full-length SUMO1, SUMO2 and SUMO3 to their mature forms and deconjugation of SUMO1, SUMO2 and SUMO3 from targeted proteins. Deconjugates SUMO1 from HIPK2. Deconjugates SUMO1 from HDAC1 and BHLHE40/DEC1, which decreases its transcriptional repression activity. Deconjugates SUMO1 from CLOCK, which decreases its transcriptional activation activity. Deconjugates SUMO2 from MTA1. Desumoylates CCAR2 which decreases its interaction with SIRT1.

**Gene ID:**

SENP1

**Uniprot**

Q9P0U3

**Synonyms:**

Sentrin-specific protease 1 (EC 3.4.22) (Sentrin/SUMO-specific protease SENP1), SENP1

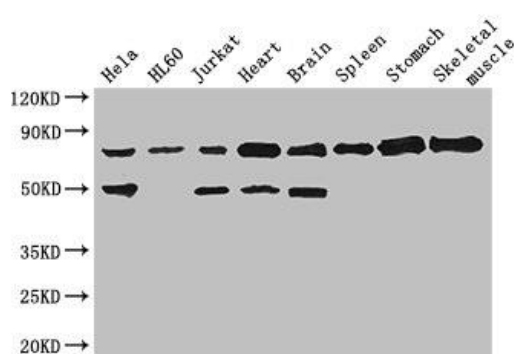
**Immunogen:**

Recombinant Human Sentrin-specific protease 1 protein (63-214AA).

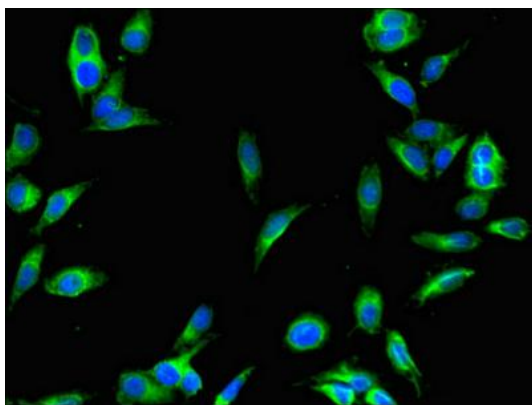
**Storage:**

Preservative: 0.03% Proclin 300. Constituents: 50% Glycerol, 0.01M PBS, PH 7.4

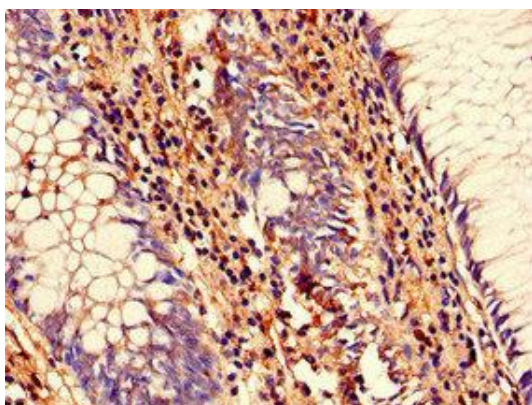
## Product Images



Western Blot. Positive WB detected in: HeLa whole cell lysate, HL60 whole cell lysate, Jurkat whole cell lysate, Mouse heart tissue, Mouse brain tissue, Mouse spleen tissue, Mouse stomach tissue, Mouse skeletal muscle tissue. All lanes: SENP1 antibody at 2.7 $\mu$ g/ml. Secondary. Goat polyclonal to rabbit IgG at 1/50000 dilution. Predicted band size: 74 kDa. Observed band size: 74, 50 kDa.



Immunofluorescent analysis of HeLa cells using PACO48782 at dilution of 1:100 and Alexa Fluor 488-conjugated AffiniPure Goat Anti-Rabbit IgG(H+L).



Immunohistochemistry of paraffin-embedded human colon cancer using PACO48782 at dilution of 1:100.