
Product Information

Size:

50ug

Reactivity:

Human

Source:

Rabbit

Isotype:

IgG

Applications:

ELISA, WB, IF

Recommended dilutions:

ELISA:1:2000-1:10000, WB:1:500-1:5000,
IF:1:50-1:200

Protein Background:

The cytotoxic action of BPI is limited to many species of Gram-negative bacteria; this specificity may be explained by a strong affinity of the very basic N-terminal half for the negatively charged lipopolysaccharides that are unique to the Gram-negative bacterial outer envelope. Has antibacterial activity against the Gram-negative bacterium *P. aeruginosa*, this activity is inhibited by LPS from *P. aeruginosa*.

Gene ID:

BPI

Uniprot

P17213

Synonyms:

Bactericidal permeability-increasing protein (BPI) (CAP 57), BPI

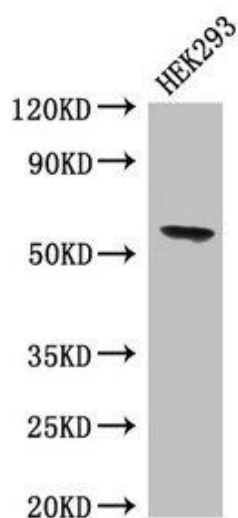
Immunogen:

Recombinant Human Bactericidal permeability-increasing protein (149-362AA).

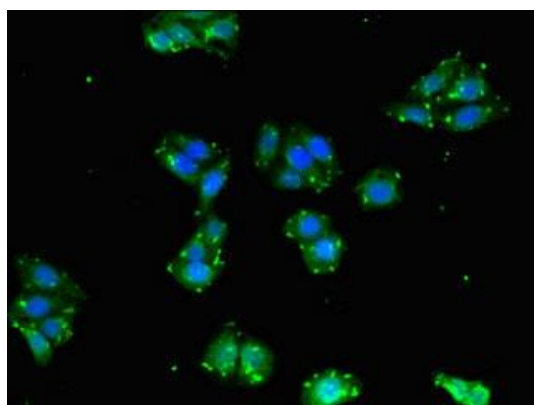
Storage:

Preservative: 0.03% Proclin 300. Constituents: 50% Glycerol, 0.01M PBS, PH 7.4

Product Images



Western Blot. Positive WB detected in: HEK293 whole cell lysate. All lanes: BPI antibody at 4 μ g/ml. Secondary. Goat polyclonal to rabbit IgG at 1/50000 dilution. Predicted band size: 54 kDa. Observed band size: 54 kDa.



Immunofluorescent analysis of HepG2 cells using PACO48846 at dilution of 1:100 and Alexa Fluor 488-conjugated AffiniPure Goat Anti-Rabbit IgG(H+L).