

PACO48914

---

## Product Information

**Size:**

50ug

**Reactivity:**

Mouse

**Source:**

Rabbit

**Isotype:**

IgG

**Applications:**

ELISA, WB

**Recommended dilutions:**

ELISA:1:2000-1:10000, WB:1:500-1:5000

**Protein Background:**

extracellular exosome, extracellular space, lysosomal lumen, lysosomal membrane, glucosylceramidase activity, hydrolase activity, receptor binding, cellular response to starvation, cellular response to tumor necrosis factor, ceramide biosynthetic process.

**Gene ID:**

Gba

**Uniprot**

P17439

**Synonyms:**

Glucosylceramidase (EC 3.2.1.45) (acid, beta-glucosidase) (Beta-glucocerebrosidase) (D-glucosyl-N-acylsphingosine glucohydrolase), Gba

**Immunogen:**

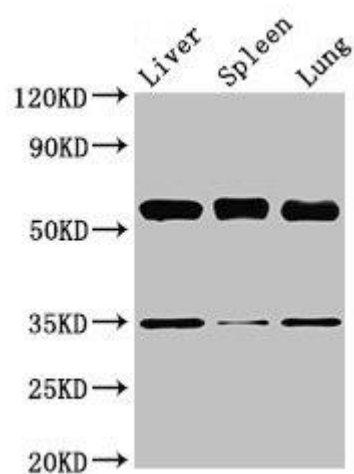
Recombinant Mouse Glucosylceramidase protein (20-515AA).

**Storage:**

Preservative: 0.03% Proclin 300. Constituents: 50% Glycerol, 0.01M PBS, PH 7.4

## Product Images

---



Western Blot. Positive WB detected in: Mouse liver tissue, Mouse spleen tissue, Mouse lung tissue. All lanes: Gba antibody at 3.5 $\mu$ g/ml. Secondary. Goat polyclonal to rabbit IgG at 1/50000 dilution. Predicted band size: 58 kDa. Observed band size: 58 kDa.