

PACO48934

Product Information

Size:

50ug

Reactivity:

Mouse

Source:

Rabbit

Isotype:

IgG

Applications:

ELISA, WB

Recommended dilutions:

ELISA:1:2000-1:10000, WB:1:500-1:5000

Protein Background:

This is a receptor for glucagon-like peptide 1. The activity of this receptor is mediated by G proteins which activate adenylyl cyclase.

Gene ID:

Glp1r

Uniprot

O35659

Synonyms:

Glucagon-like peptide 1 receptor (GLP-1 receptor) (GLP-1-R) (GLP-1R), Glp1r

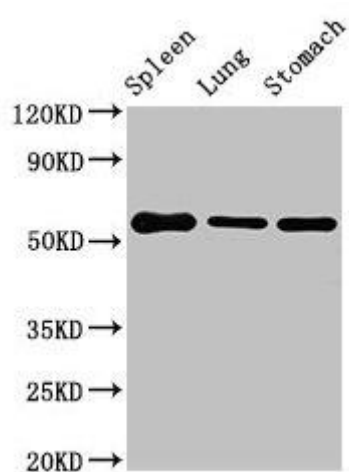
Immunogen:

Recombinant Mouse Glucagon-like peptide 1 receptor protein (22-145AA).

Storage:

Preservative: 0.03% Proclin 300. Constituents: 50% Glycerol, 0.01M PBS, PH 7.4

Product Images



Western Blot. Positive WB detected in: Mouse spleen tissue, Mouse lung tissue, Mouse stomach tissue. All lanes: Glp1r antibody at 3 μ g/ml. Secondary. Goat polyclonal to rabbit IgG at 1/50000 dilution. Predicted band size: 54 kDa. Observed band size: 54 kDa.