

IRF3 Antibody



PACO48970

Product Information

Size:

50ug

Reactivity:

Human

Source:

Rabbit

Isotype:

IgG

Applications:

ELISA, WB, IHC, IF

Recommended dilutions:

ELISA:1:2000-1:10000, WB:1:500-1:5000,
IHC:1:20-1:200, IF:1:50-1:200

Protein Background:**Gene ID:**

IRF3

Uniprot

Q96GL3

Synonyms:

IRF3 protein (Interferon regulatory factor 3, isoform CRA_b), IRF3

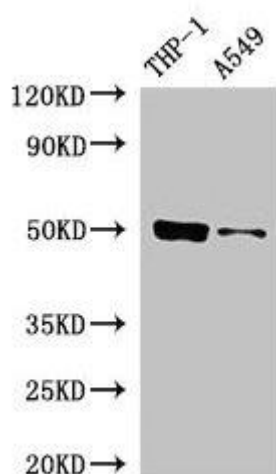
Immunogen:

Recombinant Human IRF3 protein (1-191AA).

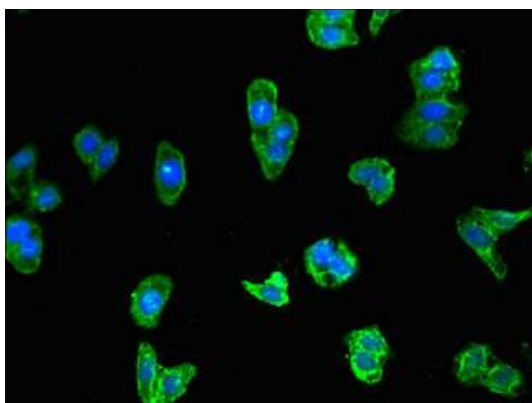
Storage:

Preservative: 0.03% Proclin 300. Constituents: 50% Glycerol, 0.01M PBS, PH 7.4

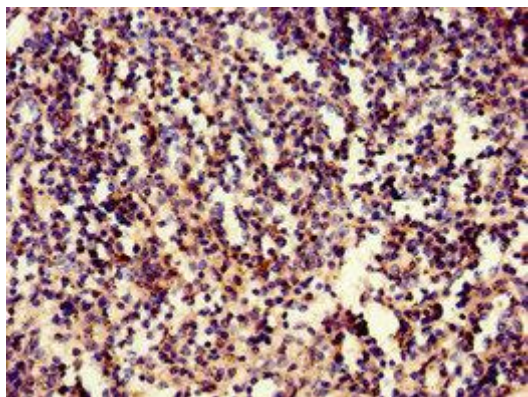
Product Images



Western Blot. Positive WB detected in: THP-1 whole cell lysate, A549 whole cell lysate. All lanes: IRF3 antibody at 5 μ g/ml. Secondary. Goat polyclonal to rabbit IgG at 1/50000 dilution. Predicted band size: 50 kDa. Observed band size: 50 kDa.



Immunofluorescent analysis of HepG2 cells using PACO48970 at dilution of 1:100 and Alexa Fluor 488-conjugated AffiniPure Goat Anti-Rabbit IgG(H+L).



Immunohistochemistry of paraffin-embedded human spleen tissue using PACO48970 at dilution of 1:100.