

# Lum Antibody



PACO48998

---

## Product Information

**Size:**

50ug

**Reactivity:**

Rat

**Source:**

Rabbit

**Isotype:**

IgG

**Applications:**

ELISA, WB

**Recommended dilutions:**

ELISA:1:2000-1:10000, WB:1:500-1:5000

**Protein Background:**

extracellular space, proteinaceous extracellular matrix, collagen binding, cartilage development, response to growth factor, response to organic cyclic compound.

**Gene ID:**

Lum

**Uniprot**

P51886

**Synonyms:**

Lumican (Keratan sulfate proteoglycan lumican) (KSPG lumican), Lum, Lcn Ldc

**Immunogen:**

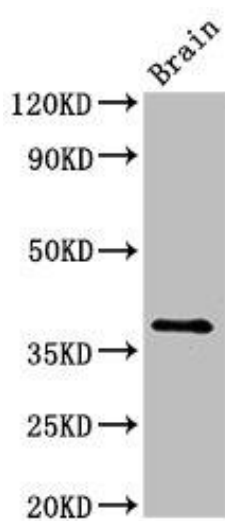
Recombinant Rat Lumican protein (19-338AA).

**Storage:**

Preservative: 0.03% Proclin 300. Constituents: 50% Glycerol, 0.01M PBS, PH 7.4

## Product Images

---



Western Blot. Positive WB detected in: Rat brain tissue. All lanes: Lum antibody at 2.5 $\mu$ g/ml. Secondary. Goat polyclonal to rabbit IgG at 1/50000 dilution. Predicted band size: 39 kDa. Observed band size: 39 kDa.