

PACO49174

Product Information

Size:

50ug

Reactivity:

Human, Mouse

Source:

Rabbit

Isotype:

IgG

Applications:

ELISA, WB, IHC

Recommended dilutions:

ELISA:1:2000-1:10000, WB:1:500-1:5000,
IHC:1:20-1:200

Protein Background:

Constitutively inactive PPIase, which becomes active when bound to calmodulin and calcium. Seems to act as a chaperone for BCL2, targets it to the mitochondria and modulates its phosphorylation state. The BCL2/FKBP8/calmodulin/calcium complex probably interferes with the binding of BCL2 to its targets. The active form of FKBP8 may therefore play a role in the regulation of apoptosis.

Gene ID:

FKBP8

Uniprot

Q14318

Synonyms:

Peptidyl-prolyl cis-trans isomerase FKBP8 (PPIase FKBP8) (EC 5.2.1.8) (38 kDa FK506-binding protein) (38 kDa FKBP) (FKBP-38) (hFKBP38) (FK506-binding protein 8) (FKBP-8) (FKBPR38) (Rotamase), FKBP8, FKBP38

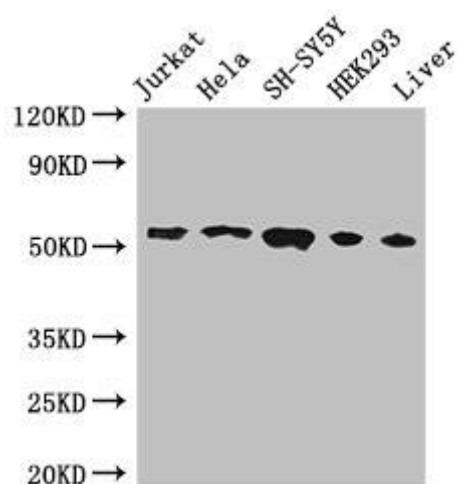
Immunogen:

Recombinant Human Peptidyl-prolyl cis-trans isomerase FKBP8 protein (58-190AA).

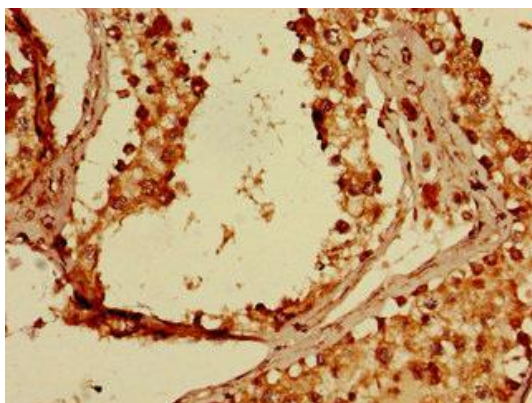
Storage:

Preservative: 0.03% Proclin 300. Constituents: 50% Glycerol, 0.01M PBS, PH 7.4

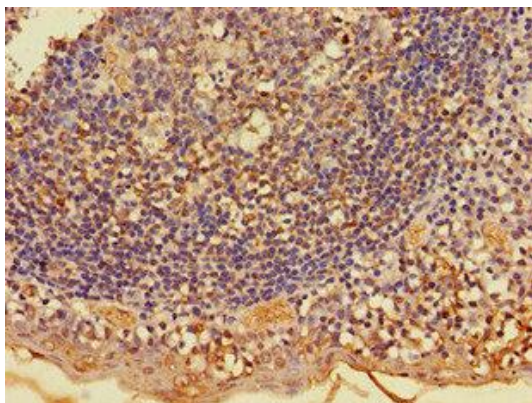
Product Images



Western Blot. Positive WB detected in: Jurkat whole cell lysate, HeLa whole cell lysate, SH-SY5Y whole cell lysate, HEK293 whole cell lysate, Mouse liver tissue. All lanes: FKBP8 antibody at 3 μ g/ml. Secondary. Goat polyclonal to rabbit IgG at 1/50000 dilution. Predicted band size: 45, 28 kDa. Observed band size: 55 kDa.



Immunohistochemistry of paraffin-embedded human testis tissue using PACO49174 at dilution of 1:100.



Immunohistochemistry of paraffin-embedded human tonsil tissue using PACO49174 at dilution of 1:100.