

SLC16A9 Antibody



PACO49214

Product Information

Size:

50ug

Reactivity:

Human, Mouse

Source:

Rabbit

Isotype:

IgG

Applications:

ELISA, WB, IHC, IF

Recommended dilutions:

ELISA:1:2000-1:10000, WB:1:500-1:5000,
IHC:1:20-1:200, IF:1:50-1:200

Protein Background:

Proton-linked monocarboxylate transporter. May catalyze the transport of monocarboxylates across the plasma membrane.

Gene ID:

SLC16A9

Uniprot

Q7RTY1

Synonyms:

Monocarboxylate transporter 9 (MCT 9) (Solute carrier family 16 member 9), SLC16A9, C10orf36 MCT9

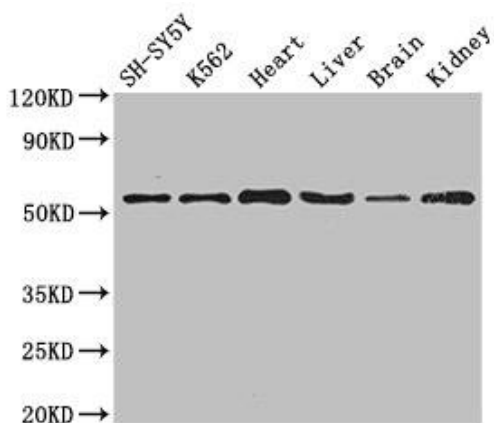
Immunogen:

Recombinant Human Monocarboxylate transporter 9 protein (185-304AA).

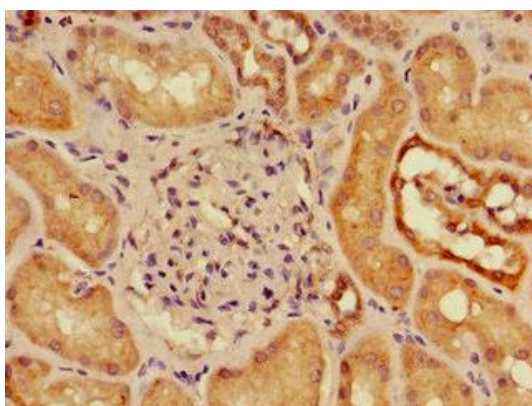
Storage:

Preservative: 0.03% Proclin 300. Constituents: 50% Glycerol, 0.01M PBS, PH 7.4

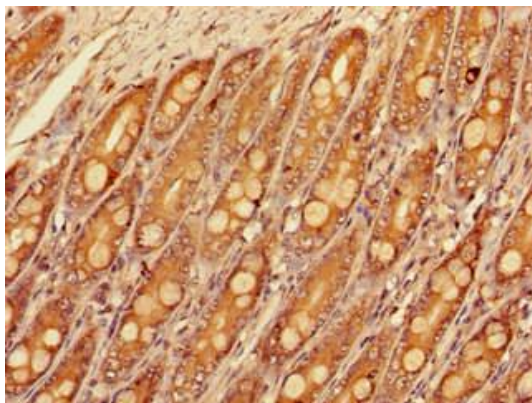
Product Images



Western Blot. Positive WB detected in: SH-SY5Y whole cell lysate, K562 whole cell lysate, Mouse heart tissue, Mouse liver tissue, Mouse brain tissue, Mouse kidney tissue. All lanes: SLC16A9 antibody at 3.5 μ g/ml. Secondary. Goat polyclonal to rabbit IgG at 1/50000 dilution. Predicted band size: 56 kDa. Observed band size: 56 kDa.



Immunohistochemistry of paraffin-embedded human kidney tissue using PACO49214 at dilution of 1:100.



Immunohistochemistry of paraffin-embedded human small intestine tissue using PACO49214 at dilution of 1:100.