

AMD1 Antibody



PACO49390

Product Information

Size:

50ug

Reactivity:

Human

Source:

Rabbit

Isotype:

IgG

Applications:

ELISA, WB, IF

Recommended dilutions:

ELISA:1:2000-1:10000, WB:1:500-1:5000,
IF:1:50-1:200

Protein Background:

Essential for biosynthesis of the polyamines spermidine and spermine. Promotes maintenance and self-renewal of embryonic stem cells, by maintaining spermine levels.

Gene ID:

AMD1

Uniprot

P17707

Synonyms:

S-adenosylmethionine decarboxylase proenzyme (AdoMetDC) (SAMDC) (EC 4.1.1.50)
[Cleaved into: S-adenosylmethionine decarboxylase alpha chain; S-adenosylmethionine decarboxylase beta chain], AMD1, AMD

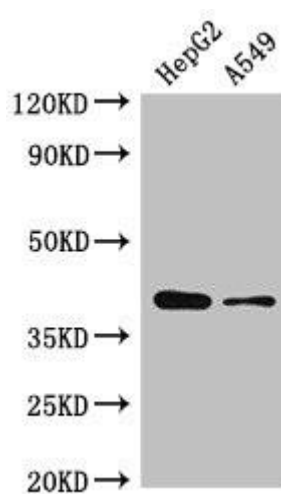
Immunogen:

Recombinant Human S-adenosylmethionine decarboxylase proenzyme protein (167-264AA).

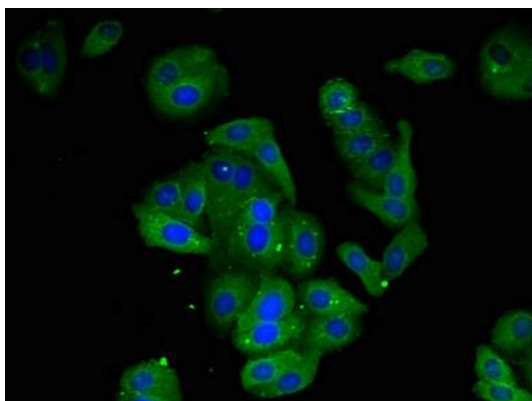
Storage:

Preservative: 0.03% Proclin 300. Constituents: 50% Glycerol, 0.01M PBS, pH 7.4

Product Images



Western Blot. Positive WB detected in: HepG2 whole cell lysate, A549 whole cell lysate. All lanes: AMD1 antibody at 2.5 μ g/ml. Secondary. Goat polyclonal to rabbit IgG at 1/50000 dilution. Predicted band size: 39, 22 kDa. Observed band size: 39 kDa.



Immunofluorescent analysis of HepG2 cells using PACO49390 at dilution of 1:100 and Alexa Fluor 488-conjugated AffiniPure Goat Anti-Rabbit IgG(H+L).