

# C6 Antibody



PACO49434

---

## Product Information

**Size:**

50ug

**Reactivity:**

Human, Mouse, Rat

**Source:**

Rabbit

**Isotype:**

IgG

**Applications:**

ELISA, WB, IHC

**Recommended dilutions:**

ELISA:1:2000-1:10000, WB:1:500-1:5000,  
IHC:1:20-1:200

**Protein Background:**

Constituent of the membrane attack complex (MAC) that plays a key role in the innate and adaptive immune response by forming pores in the plasma membrane of target cells.

**Gene ID:**

C6

**Uniprot**

P13671

**Synonyms:**

Complement component C6, C6

**Immunogen:**

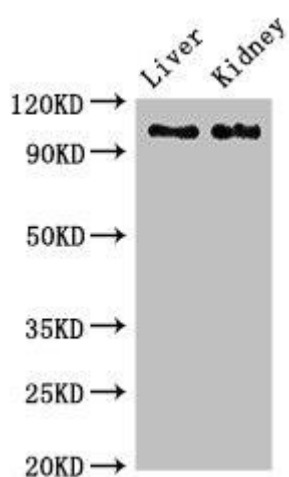
Recombinant Human Complement component C6 protein (521-655AA).

**Storage:**

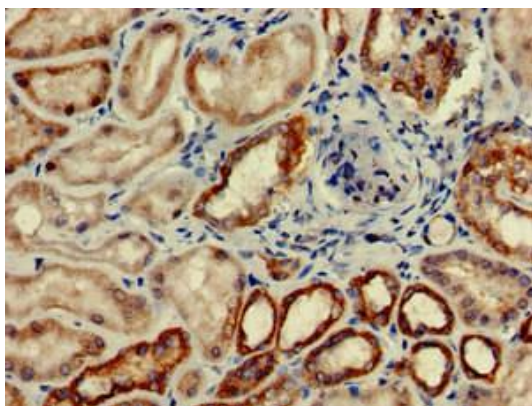
Preservative: 0.03% Proclin 300. Constituents: 50% Glycerol, 0.01M PBS, pH 7.4

## Product Images

---



Western Blot. Positive WB detected in: Rat liver tissue, Mouse kidney tissue. All lanes: C6 antibody at 2.7 $\mu$ g/ml. Secondary. Goat polyclonal to rabbit IgG at 1/50000 dilution. Predicted band size: 105 kDa. Observed band size: 105 kDa.



Immunohistochemistry of paraffin-embedded human kidney tissue using PACO49434 at dilution of 1:100.