

CALCA Antibody



PACO49442

Product Information

Size:

50ug

Reactivity:

Dog

Source:

Rabbit

Isotype:

IgG

Applications:

ELISA, WB

Recommended dilutions:

ELISA:1:2000-1:10000, WB:1:500-1:5000

Protein Background:

Causes a rapid but short-lived drop in the level of calcium and phosphate in blood by promoting the incorporation of those ions in the bones.

Gene ID:

CALCA

Uniprot

P41547

Synonyms:

Calcitonin, CALCA, CALC CCALCI

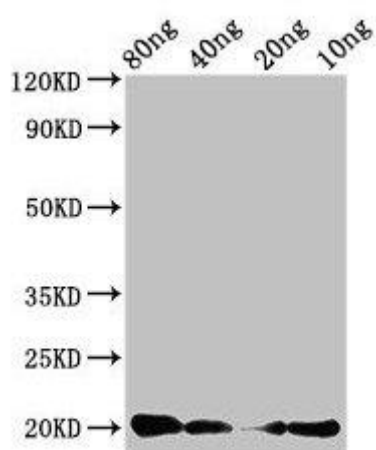
Immunogen:

Recombinant Dog Calcitonin protein (85-116AA).

Storage:

Preservative: 0.03% Proclin 300. Constituents: 50% Glycerol, 0.01M PBS, pH 7.4

Product Images



Western Blot. Positive WB detected in Recombinant protein. All lanes: CALCA antibody at 3 μ g/ml. Secondary. Goat polyclonal to rabbit IgG at 1/50000 dilution. Predicted band size: 20 kDa. Observed band size: 20 kDa.