

PACO49462

---

## Product Information

**Size:**

50ug

**Reactivity:**

Human

**Source:**

Rabbit

**Isotype:**

IgG

**Applications:**

ELISA, IHC, IF

**Recommended dilutions:**

ELISA:1:2000-1:10000, IHC:1:20-1:200,  
IF:1:50-1:200

**Protein Background:**

Interacts strongly with CDK6, weakly with CDK4. Inhibits cell growth and proliferation with a correlated dependence on endogenous retinoblastoma protein RB.

**Gene ID:**

CDKN2C

**Uniprot**

P42773

**Synonyms:**

Cyclin-dependent kinase 4 inhibitor C (Cyclin-dependent kinase 6 inhibitor) (p18-INK4c) (p18-INK6), CDKN2C, CDKN6

**Immunogen:**

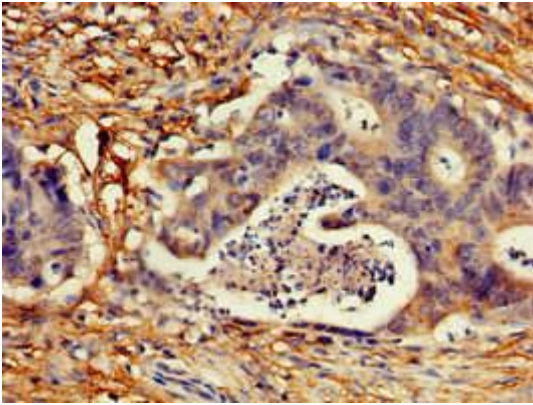
Recombinant Human Cyclin-dependent kinase 4 inhibitor C protein (1-68AA).

**Storage:**

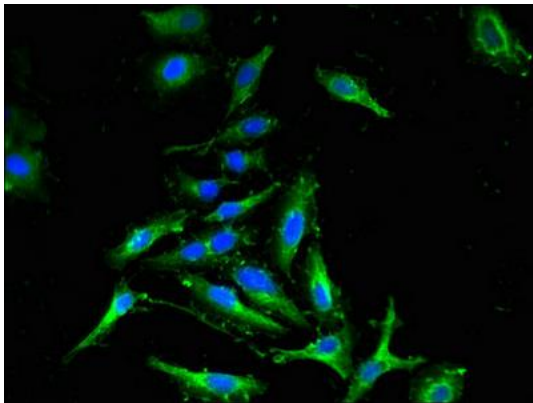
Preservative: 0.03% Proclin 300. Constituents: 50% Glycerol, 0.01M PBS, pH 7.4

## Product Images

---



Immunohistochemistry of paraffin-embedded human colon cancer using PACO49462 at dilution of 1:100.



Immunofluorescent analysis of HeLa cells using PACO49462 at dilution of 1:100 and Alexa Fluor 488-conjugated AffiniPure Goat Anti-Rabbit IgG(H+L).