

PACO49466

Product Information

Size:

50ug

Reactivity:

Human

Source:

Rabbit

Isotype:

IgG

Applications:

ELISA, WB

Recommended dilutions:

ELISA:1:2000-1:10000, WB:1:500-1:5000

Protein Background:

Cooperates with CDC6 to promote the loading of the mini-chromosome maintenance complex onto chromatin to form the pre-replication complex necessary to initiate DNA replication. Binds DNA in a sequence-, strand-, and conformation-independent manner. Potential oncogene.

Gene ID:

CDT1

Uniprot

Q9H211

Synonyms:

DNA replication factor Cdt1 (Double parked homolog) (DUP), CDT1

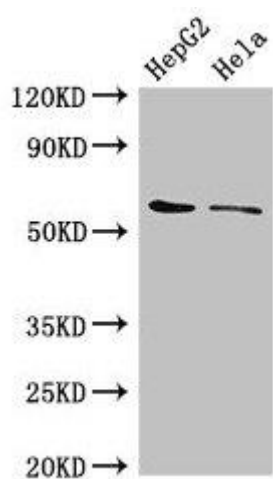
Immunogen:

Recombinant Human DNA replication factor Cdt1 protein (12-170AA).

Storage:

Preservative: 0.03% Proclin 300. Constituents: 50% Glycerol, 0.01M PBS, pH 7.4

Product Images



Western Blot. Positive WB detected in: HepG2 whole cell lysate, HeLa whole cell lysate. All lanes: CDT1 antibody at 3 μ g/ml. Secondary: Goat polyclonal to rabbit IgG at 1/50000 dilution. Predicted band size: 61 kDa. Observed band size: 61 kDa.