

PACO49606

Product Information

Size:

50ug

Reactivity:

Human

Source:

Rabbit

Isotype:

IgG

Applications:

ELISA, IHC

Recommended dilutions:

ELISA:1:2000-1:10000, IHC:1:20-1:200

Protein Background:

Furin is likely to represent the ubiquitous endoprotease activity within constitutive secretory pathways and capable of cleavage at the RX(K/R)R consensus motif.

Gene ID:

FURIN

Uniprot

P09958

Synonyms:

Furin (EC 3.4.21.75) (Dibasic-processing enzyme) (Paired basic amino acid, residue-cleaving enzyme) (PACE), FURIN, FUR PACE PCSK3

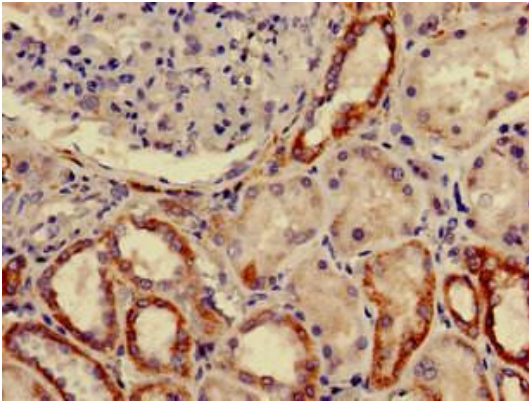
Immunogen:

Recombinant Human Furin protein (520-701AA).

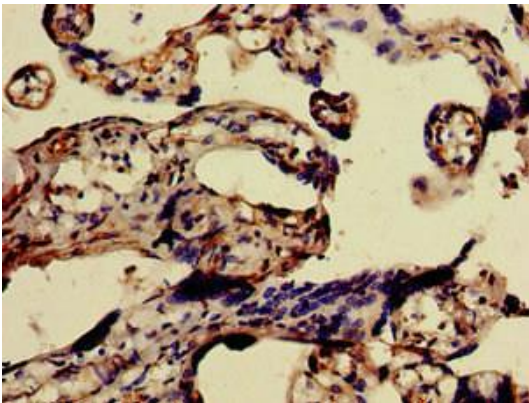
Storage:

Preservative: 0.03% Proclin 300. Constituents: 50% Glycerol, 0.01M PBS, pH 7.4

Product Images



Immunohistochemistry of paraffin-embedded human kidney tissue using PACO49606 at dilution of 1:100.



Immunohistochemistry of paraffin-embedded human placenta tissue using PACO49606 at dilution of 1:100.