

GDF11 Antibody



PACO49630

Product Information

Size:

50ug

Reactivity:

Pig, Mouse

Source:

Rabbit

Isotype:

IgG

Applications:

ELISA, WB

Recommended dilutions:

ELISA:1:2000-1:10000, WB:1:500-1:5000

Protein Background:**Gene ID:**

GDF11

Uniprot

Q9BG54

Synonyms:

Growth/differentiation factor 11 (GDF-11) (Bone morphogenetic protein 11) (BMP-11), Gdf11, Bmp11

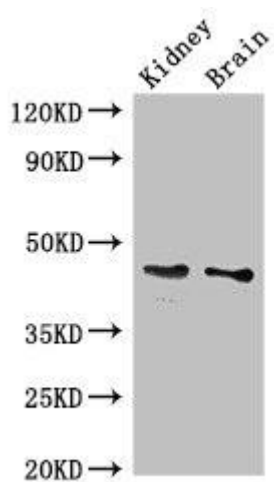
Immunogen:

Recombinant Pig Growth differentiation factor 11 protein (296-404AA).

Storage:

Preservative: 0.03% Proclin 300. Constituents: 50% Glycerol, 0.01M PBS, pH 7.4

Product Images



Western Blot. Positive WB detected in: Mouse kidney tissue, Mouse brain tissue. All lanes: GDF11 antibody at 3 μ g/ml. Secondary. Goat polyclonal to rabbit IgG at 1/50000 dilution. Predicted band size: 46 kDa. Observed band size: 46 kDa.