

# IFI44L Antibody



PACO49682

---

## Product Information

**Size:**

50ug

**Reactivity:**

Human, Mouse

**Source:**

Rabbit

**Isotype:**

IgG

**Applications:**

ELISA, WB, IF

**Recommended dilutions:**

ELISA:1:2000-1:10000, WB:1:500-1:5000,  
IF:1:50-1:200

**Protein Background:**

Exhibits a low antiviral activity against hepatitis C virus.

**Gene ID:**

IFI44L

**Uniprot**

Q53G44

**Synonyms:**

Interferon-induced protein 44-like, IFI44L, C1orf29

**Immunogen:**

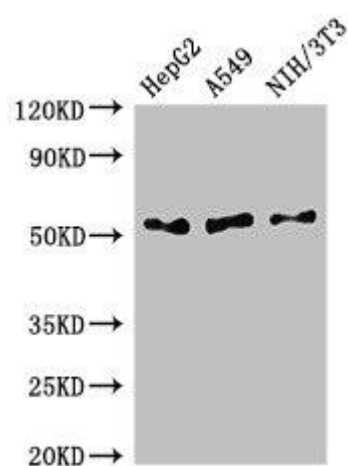
Recombinant Human Interferon-induced protein 44-like protein (206-307AA).

**Storage:**

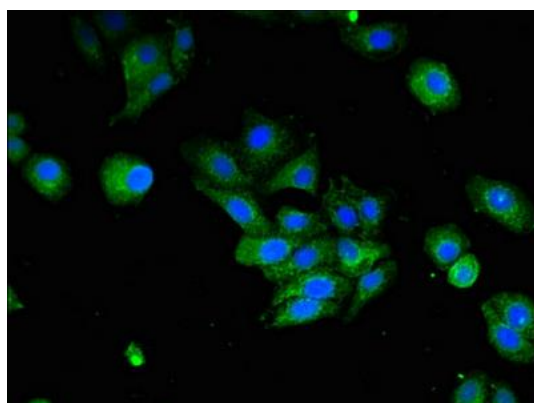
Preservative: 0.03% Proclin 300. Constituents: 50% Glycerol, 0.01M PBS, pH 7.4

## Product Images

---



Western Blot. Positive WB detected in: HepG2 whole cell lysate, A549 whole cell lysate, NIH/3T3 whole cell lysate. All lanes: IF144L antibody at 2.5µg/ml. Secondary. Goat polyclonal to rabbit IgG at 1/50000 dilution. Predicted band size: 52, 19 kDa. Observed band size: 52 kDa.



Immunofluorescent analysis of HepG2 cells using PACO49682 at dilution of 1:100 and Alexa Fluor 488-conjugated AffiniPure Goat Anti-Rabbit IgG(H+L).