
Product Information

Size:

50ug

Reactivity:

Bovine

Source:

Rabbit

Isotype:

IgG

Applications:

ELISA, WB

Recommended dilutions:

ELISA:1:2000-1:10000, WB:1:500-1:5000

Protein Background:

Produced by lymphocytes activated by specific antigens or mitogens. IFN-gamma, in addition to having antiviral activity, has important immunoregulatory functions. It is a potent activator of macrophages, it has antiproliferative effects on transformed cells and it can potentiate the antiviral and antitumor effects of the type I interferons.

Gene ID:

IFNG

Uniprot

P07353

Synonyms:

Interferon gamma (BoIFNG) (IFN-gamma), IFNG

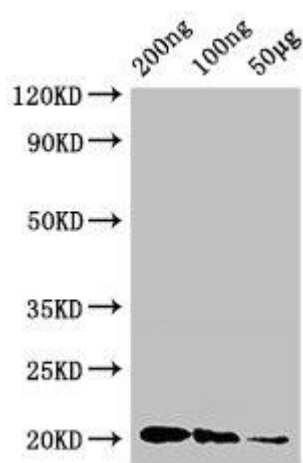
Immunogen:

Recombinant Bovine Interferon γ protein (24-166AA).

Storage:

Preservative: 0.03% Proclin 300. Constituents: 50% Glycerol, 0.01M PBS, pH 7.4

Product Images



Western Blot. Positive WB detected in Recombinant protein. All lanes: IFNG antibody at 3µg/ml. Secondary. Goat polyclonal to rabbit IgG at 1/50000 dilution. predicted band size: 20 kDa. observed band size: 20 kDa.