

KIF11 Antibody



PACO49726

Product Information

Size:

50ug

Reactivity:

Human, Mouse

Source:

Rabbit

Isotype:

IgG

Applications:

ELISA, WB, IF

Recommended dilutions:

ELISA:1:2000-1:10000, WB:1:500-1:5000,
IF:1:50-1:200

Protein Background:

Motor protein required for establishing a bipolar spindle during mitosis. Required in non-mitotic cells for transport of secretory proteins from the Golgi complex to the cell surface.

Gene ID:

KIF11

Uniprot

P52732

Synonyms:

Kinesin-like protein KIF11 (Kinesin-like protein 1) (Kinesin-like spindle protein HKSP) (Kinesin-related motor protein Eg5) (Thyroid receptor-interacting protein 5) (TR-interacting protein 5) (TRIP-5), KIF11, EG5 KNSL1 TRIP5

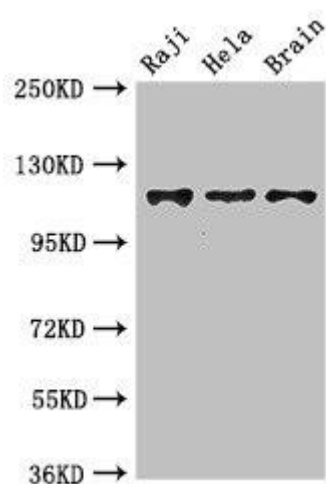
Immunogen:

Recombinant Human Kinesin-like protein KIF11 protein (920-1038AA).

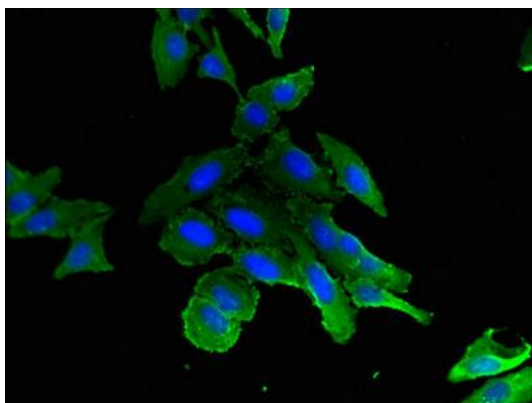
Storage:

Preservative: 0.03% Proclin 300. Constituents: 50% Glycerol, 0.01M PBS, pH 7.4

Product Images



Western Blot. Positive WB detected in: Raji whole cell lysate, HeLa whole cell lysate, Mouse brain tissue. All lanes: KIF11 antibody at 3.5 μ g/ml. Secondary. Goat polyclonal to rabbit IgG at 1/50000 dilution. Predicted band size: 120 kDa. Observed band size: 120 kDa.



Immunofluorescent analysis of HeLa cells using PACO49726 at dilution of 1:100 and Alexa Fluor 488-conjugated AffiniPure Goat Anti-Rabbit IgG(H+L).