

KLKB1 Antibody



PACO49730

Product Information

Size:

50ug

Reactivity:

Human, Mouse, Rat

Source:

Rabbit

Isotype:

IgG

Applications:

ELISA, WB, IHC

Recommended dilutions:

ELISA:1:2000-1:10000, WB:1:500-1:5000,
IHC:1:20-1:200

Protein Background:

The enzyme cleaves Lys-Arg and Arg-Ser bonds. It activates, in a reciprocal reaction, factor XII after its binding to a negatively charged surface. It also releases bradykinin from HMW kininogen and may also play a role in the renin-angiotensin system by converting prorenin into renin.

Gene ID:

KLKB1

Uniprot

P03952

Synonyms:

Plasma kallikrein (EC 3.4.21.34) (Fletcher factor) (Kininogenin) (Plasma prekallikrein) (PKK) [Cleaved into: Plasma kallikrein heavy chain; Plasma kallikrein light chain], KLKB1, KLK3

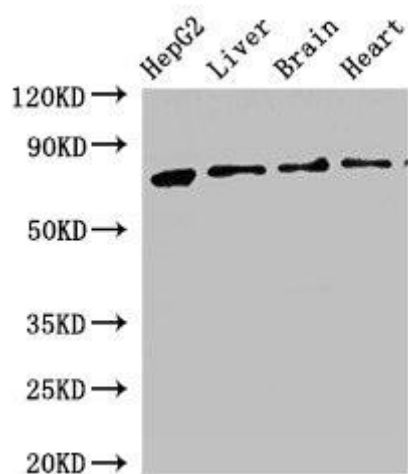
Immunogen:

Recombinant Human Plasma kallikrein protein (503-612AA).

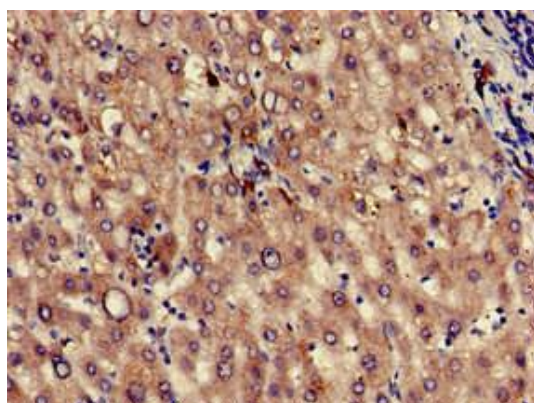
Storage:

Preservative: 0.03% Proclin 300. Constituents: 50% Glycerol, 0.01M PBS, pH 7.4

Product Images



Western Blot. Positive WB detected in: HepG2 whole cell lysate, Rat liver tissue, Rat brain tissue, Mouse heart tissue. All lanes: KLKB1 antibody at 2.5 μ g/ml. Secondary. Goat polyclonal to rabbit IgG at 1/50000 dilution. Predicted band size: 72 kDa. Observed band size: 72 kDa.



Immunohistochemistry of paraffin-embedded human liver tissue using PACO49730 at dilution of 1:100.