

# KRT13 Antibody



PACO49734

---

## Product Information

**Size:**

50ug

**Reactivity:**

Human

**Source:**

Rabbit

**Isotype:**

IgG

**Applications:**

ELISA, IHC

**Recommended dilutions:**

ELISA:1:2000-1:10000, IHC:1:20-1:200

**Protein Background:**

extracellular exosome, intermediate filament cytoskeleton, keratin filament, nucleus, cytoskeleton organization.

**Gene ID:**

KRT13

**Uniprot**

P13646

**Synonyms:**

Keratin, type I cytoskeletal 13 (Cytokeratin-13) (CK-13) (Keratin-13) (K13), KRT13

**Immunogen:**

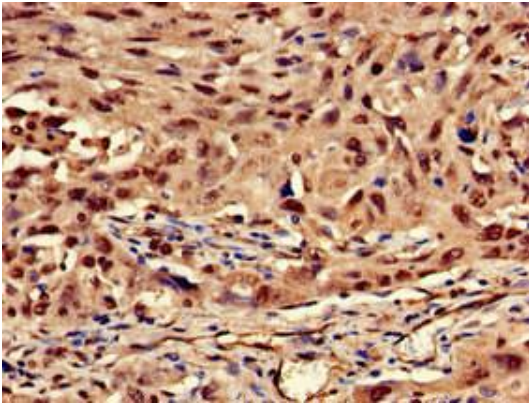
Recombinant Human Keratin, type I cytoskeletal 13 protein (420-458AA).

**Storage:**

Preservative: 0.03% Proclin 300. Constituents: 50% Glycerol, 0.01M PBS, pH 7.4

## Product Images

---



Immunohistochemistry of paraffin-embedded human lung cancer using PACO49734 at dilution of 1:100.