

LDHC Antibody



PACO49742

Product Information

Size:

50ug

Reactivity:

Human, Mouse, Rat

Source:

Rabbit

Isotype:

IgG

Applications:

ELISA, WB, IHC, IF

Recommended dilutions:

ELISA:1:2000-1:10000, WB:1:500-1:5000,
IHC:1:20-1:200, IF:1:50-1:200

Protein Background:

Possible role in sperm motility.

Gene ID:

LDHC

Uniprot

P07864

Synonyms:

L-lactate dehydrogenase C chain (LDH-C) (EC 1.1.1.27) (Cancer/testis antigen 32) (CT32) (LDH testis subunit) (LDH-X), LDHC, LDH3 LDHX

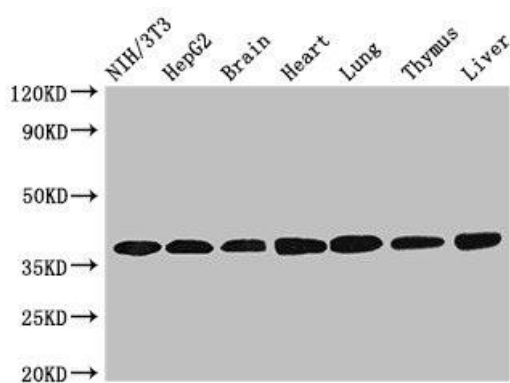
Immunogen:

Recombinant Human L-lactate dehydrogenase C chain protein (2-332AA).

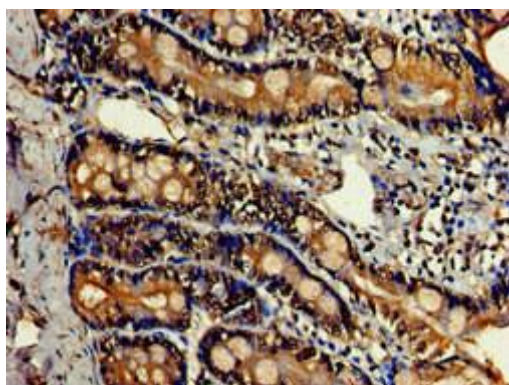
Storage:

Preservative: 0.03% Proclin 300. Constituents: 50% Glycerol, 0.01M PBS, pH 7.4

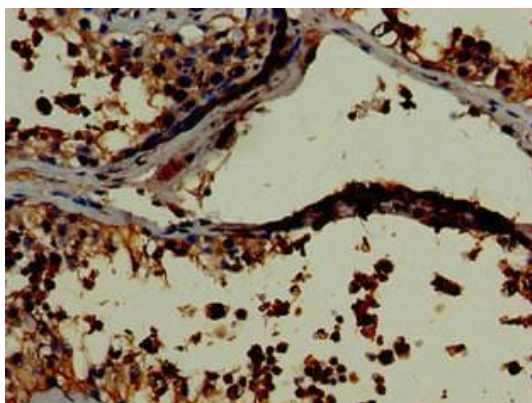
Product Images



Western Blot. Positive WB detected in: NIH/3T3 whole cell lysate, HepG2 whole cell lysate, Mouse brain tissue, Mouse heart tissue, Mouse lung tissue, Mouse thymus tissue, Rat liver tissue. All lanes: LDHC antibody at 3.2 μ g/ml. Secondary. Goat polyclonal to rabbit IgG at 1/50000 dilution. Predicted band size: 37 kDa. Observed band size: 37 kDa.



Immunohistochemistry of paraffin-embedded human small intestine tissue using PACO49742 at dilution of 1:100.



Immunohistochemistry of paraffin-embedded human testis tissue using PACO49742 at dilution of 1:100.