

# MTNR1B Antibody



PACO49782

---

## Product Information

**Size:**

50ug

**Reactivity:**

Human

**Source:**

Rabbit

**Isotype:**

IgG

**Applications:**

ELISA, IHC, IF

**Recommended dilutions:**

ELISA:1:2000-1:10000, IHC:1:20-1:200,  
IF:1:50-1:200

**Protein Background:**

High affinity receptor for melatonin. Likely to mediate the reproductive and circadian actions of melatonin. The activity of this receptor is mediated by pertussis toxin sensitive G proteins that inhibit adenylate cyclase activity.

**Gene ID:**

MTNR1B

**Uniprot**

P49286

**Synonyms:**

Melatonin receptor type 1B (Mel-1B-R) (Mel1b receptor), MTNR1B

**Immunogen:**

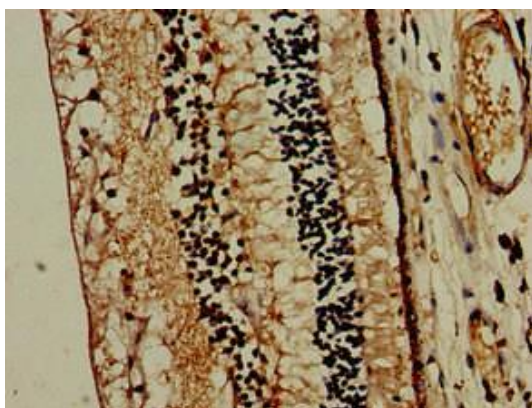
Recombinant Human Melatonin receptor type 1B protein (1-42AA).

**Storage:**

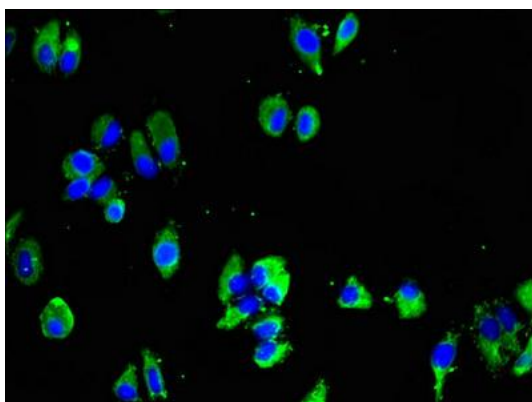
Preservative: 0.03% Proclin 300. Constituents: 50% Glycerol, 0.01M PBS, pH 7.4

## Product Images

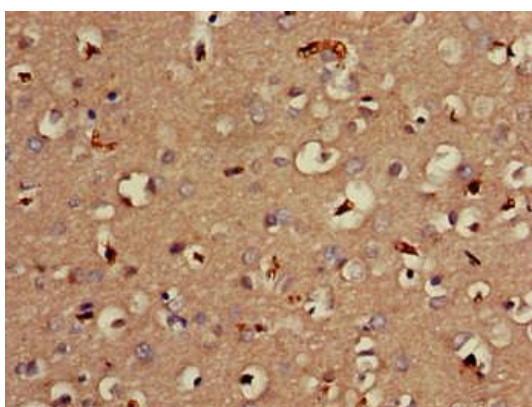
---



Immunohistochemistry of paraffin-embedded human eye tissue using PACO49782 at dilution of 1:100.



Immunofluorescent analysis of HepG2 cells using PACO49782 at dilution of 1:100 and Alexa Fluor 488-conjugated AffiniPure Goat Anti-Rabbit IgG(H+L).



Immunohistochemistry of paraffin-embedded human brain tissue using PACO49782 at dilution of 1:100.