

# MTRF1 Antibody



PACO49786

---

## Product Information

**Size:**

50ug

**Reactivity:**

Human

**Source:**

Rabbit

**Isotype:**

IgG

**Applications:**

ELISA, WB, IHC, IF

**Recommended dilutions:**

ELISA:1:2000-1:10000, WB:1:500-1:5000,  
IHC:1:20-1:200, IF:1:50-1:200

**Protein Background:**

Mitochondrial peptide chain release factor that directs the termination of translation in response to the peptide chain non-cognate termination stop codons AGG and AGA.

**Gene ID:**

MTRF1

**Uniprot**

O75570

**Synonyms:**

Peptide chain release factor 1, mitochondrial (MRF-1) (MtRF-1), MTRF1

**Immunogen:**

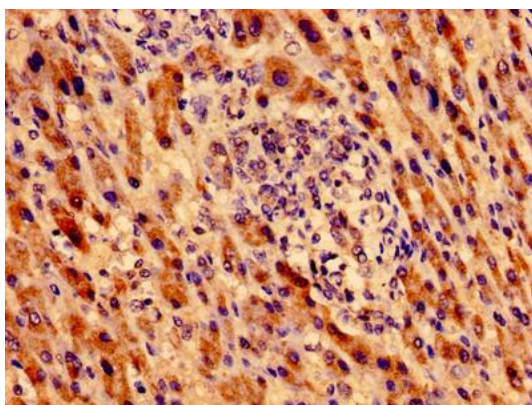
Recombinant Human Peptide chain release factor 1, mitochondrial protein (285-433AA).

**Storage:**

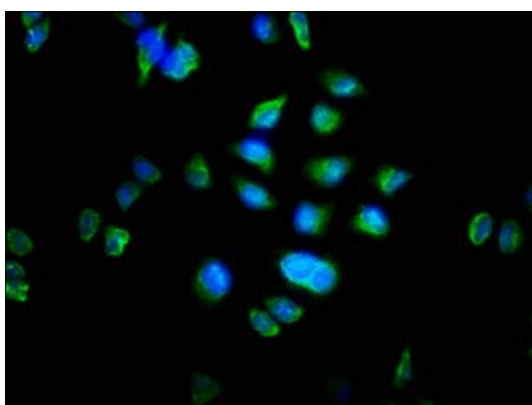
Preservative: 0.03% Proclin 300. Constituents: 50% Glycerol, 0.01M PBS, pH 7.4

## Product Images

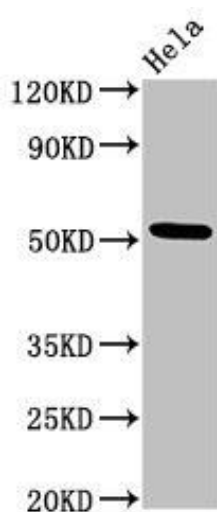
---



Immunohistochemistry of paraffin-embedded human liver cancer using PACO49786 at dilution of 1:100.



Immunofluorescence staining of HeLa cells with PACO49786 at 1:100, counter-stained with DAPI. The cells were fixed in 4% formaldehyde, permeabilized using 0.2% Triton X-100 and blocked in 10% normal Goat Serum. The cells were then incubated with the antibody overnight at 4°C. The secondary antibody was Alexa Fluor 488-conjugated AffiniPure Goat Anti-Rabbit IgG(H+L).



Western Blot. Positive WB detected in: HeLa whole cell lysate. All lanes: MTRF1 antibody at 3µg/ml. Secondary. Goat polyclonal to rabbit IgG at 1/50000 dilution. Predicted band size: 53, 55 kDa. Observed band size: 53 kDa.