

PACO49826

Product Information

Size:

50ug

Reactivity:

Mouse

Source:

Rabbit

Isotype:

IgG

Applications:

ELISA, WB

Recommended dilutions:

ELISA:1:2000-1:10000, WB:1:500-1:5000

Protein Background:

Has some calmodulin-like activity with respect to enzyme activation and growth regulation. Binds two calcium ions.

Gene ID:

Ocm

Uniprot

P51879

Synonyms:

Oncomodulin (OM) (Parvalbumin beta), Ocm

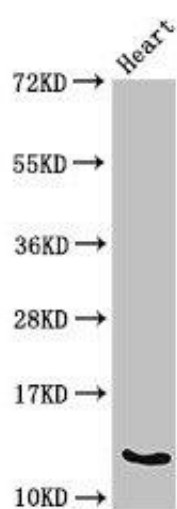
Immunogen:

Recombinant Mouse Oncomodulin protein (2-109AA).

Storage:

Preservative: 0.03% Proclin 300. Constituents: 50% Glycerol, 0.01M PBS, pH 7.4

Product Images



Western Blot. Positive WB detected in: Mouse heart tissue. All lanes: Ocm antibody at 3 μ g/ml. Secondary. Goat polyclonal to rabbit IgG at 1/50000 dilution. Predicted band size: 13 kDa. Observed band size: 13 kDa.