

Product Information

Size:

50ug

Reactivity:

Human

Source:

Rabbit

Isotype:

IgG

Applications:

ELISA, IHC, IP

Recommended dilutions:

ELISA:1:2000-1:10000, IHC:1:20-1:200,
IP:1:200-1:2000

Protein Background:

This protein is, quantitatively, the main protein synthesized and secreted in the endometrium from mid-luteal phase of the menstrual cycle and during the first semester of pregnancy.

Gene ID:

PAEP

Uniprot

P09466

Synonyms:

Glycodelin (GD) (Placental protein 14) (PP14) (Pregnancy-associated endometrial alpha-2 globulin) (PAEG) (PEG) (Progestagen-associated endometrial protein) (Progesterone-associated endometrial protein) (Zona-binding inhibitory factor-1) (ZIF-1), PAEP

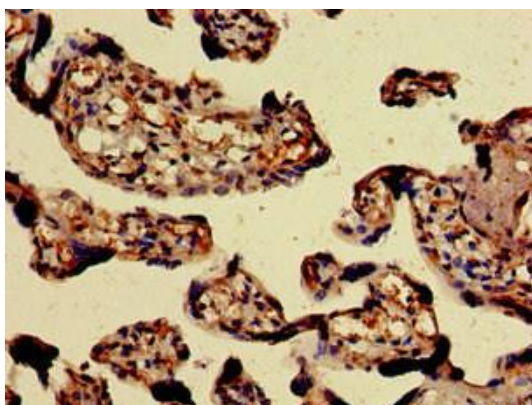
Immunogen:

Recombinant Human Glycodelin protein (19-180AA).

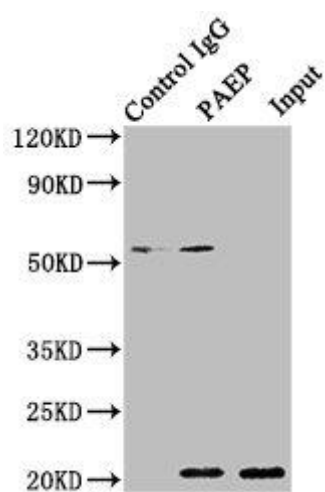
Storage:

Preservative: 0.03% Proclin 300. Constituents: 50% Glycerol, 0.01M PBS, pH 7.4

Product Images



Immunohistochemistry of paraffin-embedded human placenta tissue using PACO49854 at dilution of 1:100.



Immunoprecipitating PAEP in 293T whole cell lysate. Lane 1: Rabbit control IgG instead of PACO49854 in 293T whole cell lysate. For western blotting, a HRP-conjugated Protein G antibody was used as the secondary antibody (1/2000). Lane 2: PACO49854 (8 μ g) + 293T whole cell lysate (500 μ g). Lane 3: 293T whole cell lysate (10 μ g).