

Product Information

Size:

50ug

Reactivity:

Human

Source:

Rabbit

Isotype:

IgG

Applications:

ELISA, IHC

Recommended dilutions:

ELISA:1:2000-1:10000, IHC:1:20-1:200

Protein Background:

The production of the second messenger molecules diacylglycerol (DAG) and inositol 1,4,5-trisphosphate (IP3) is mediated by activated phosphatidylinositol-specific phospholipase C enzymes. Essential for trophoblast and placental development.

Gene ID:

PLCD1

Uniprot

P51178

Synonyms:

1-phosphatidylinositol 4,5-bisphosphate phosphodiesterase delta-1 (EC 3.1.4.11) (Phosphoinositide phospholipase C-delta-1) (Phospholipase C-III) (PLC-III) (Phospholipase C-delta-1) (PLC-delta-1), PLCD1

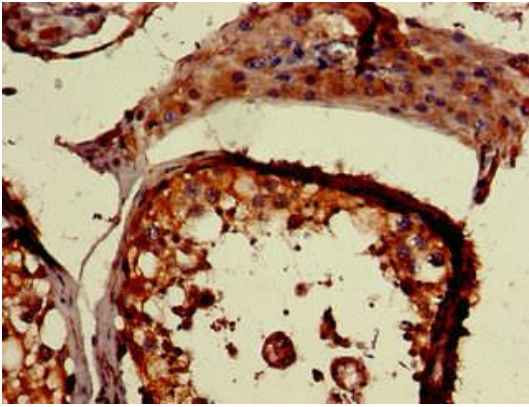
Immunogen:

Recombinant Human 1-phosphatidylinositol 4,5-bisphosphate phosphodiesterase delta-1 protein (419-653AA).

Storage:

Preservative: 0.03% Proclin 300. Constituents: 50% Glycerol, 0.01M PBS, pH 7.4

Product Images



Immunohistochemistry of paraffin-embedded human testis tissue using PACO49878 at dilution of 1:100.