

PACO49906

---

## Product Information

**Size:**

50ug

**Reactivity:**

Human

**Source:**

Rabbit

**Isotype:**

IgG

**Applications:**

ELISA, IHC, IF

**Recommended dilutions:**

ELISA:1:2000-1:10000, IHC:1:20-1:200,  
IF:1:50-1:200

**Protein Background:**

Protein C is a vitamin K-dependent serine protease that regulates blood coagulation by inactivating factors Va and VIIIa in the presence of calcium ions and phospholipids. Exerts a protective effect on the endothelial cell barrier function.

**Gene ID:**

PROC

**Uniprot**

P04070

**Synonyms:**

Vitamin K-dependent protein C (EC 3.4.21.69) (Anticoagulant protein C) (Autoprothrombin IIA) (Blood coagulation factor XIV) [Cleaved into: Vitamin K-dependent protein C light chain; Vitamin K-dependent protein C heavy chain; Activation peptide], PROC

**Immunogen:**

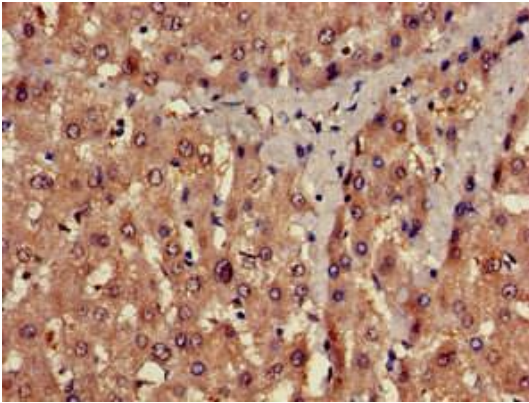
Recombinant Human Vitamin K-dependent protein C protein (288-409AA).

**Storage:**

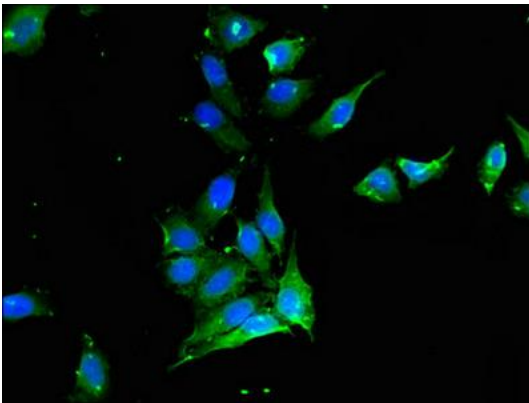
Preservative: 0.03% Proclin 300. Constituents: 50% Glycerol, 0.01M PBS, pH 7.4

## Product Images

---



Immunohistochemistry of paraffin-embedded human liver tissue using PACO49906 at dilution of 1:100.



Immunofluorescent analysis of HeLa cells using PACO49906 at dilution of 1:100 and Alexa Fluor 488-conjugated AffiniPure Goat Anti-Rabbit IgG(H+L).