

Product Information

Size:

50ug

Reactivity:

Human, Mouse, Rat

Source:

Rabbit

Isotype:

IgG

Applications:

ELISA, WB, IHC, IF

Recommended dilutions:

ELISA:1:2000-1:10000, WB:1:500-1:5000,
IHC:1:20-1:200, IF:1:50-1:200

Protein Background:

The proteasome is a multicatalytic proteinase complex which is characterized by its ability to cleave peptides with Arg, Phe, Tyr, Leu, and Glu adjacent to the leaving group at neutral or slightly basic pH. The proteasome has an ATP-dependent proteolytic activity. Binds to the C-terminus of CDKN1A and thereby mediates its degradation. Negatively regulates the membrane trafficking of the cell-surface thromboxane A2 receptor (TBXA2R) isoform 2.

Gene ID:

PSMA3

Uniprot

P25788

Synonyms:

Proteasome subunit alpha type-3 (EC 3.4.25.1) (Macropain subunit C8) (Multicatalytic endopeptidase complex subunit C8) (Proteasome component C8), PSMA3, HC8 PSC8

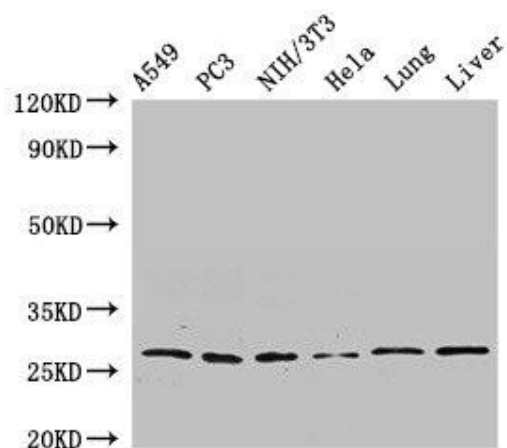
Immunogen:

Recombinant Human Proteasome subunit α type-3 protein (218-248AA).

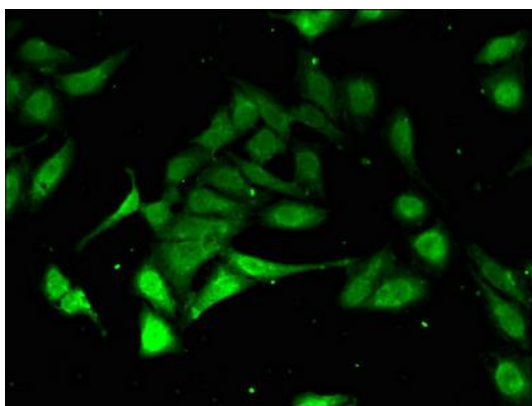
Storage:

Preservative: 0.03% Proclin 300. Constituents: 50% Glycerol, 0.01M PBS, pH 7.4

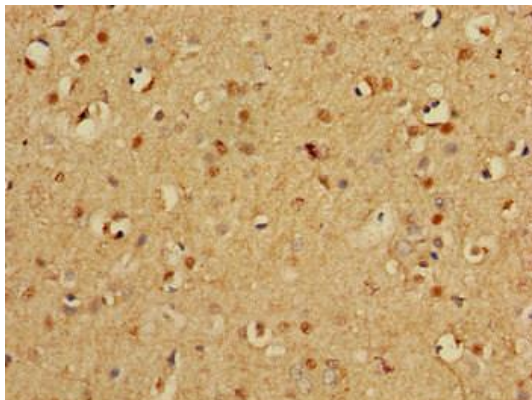
Product Images



Western Blot. Positive WB detected in: A549 whole cell lysate, PC-3 whole cell lysate, NIH/3T3 whole cell lysate, HeLa whole cell lysate, Rat lung tissue, Mouse liver tissue. All lanes: PSMA3 antibody at 2.7 μ g/ml. Secondary. Goat polyclonal to rabbit IgG at 1/50000 dilution. Predicted band size: 29, 28 kDa. Observed band size: 29 kDa.



Immunofluorescent analysis of HeLa cells using PACO49922 at dilution of 1:100 and Alexa Fluor 488-conjugated AffiniPure Goat Anti-Rabbit IgG(H+L).



Immunohistochemistry of paraffin-embedded human brain tissue using PACO49922 at dilution of 1:100.