

Product Information

Size:

50ug

Reactivity:

Human

Source:

Rabbit

Isotype:

IgG

Applications:

ELISA, IHC, IF

Recommended dilutions:

ELISA:1:2000-1:10000, IHC:1:20-1:200,
IF:1:50-1:200

Protein Background:

Ligand for multiple Notch receptors and involved in the mediation of Notch signaling. May be involved in cell-fate decisions during hematopoiesis. Seems to be involved in early and late stages of mammalian cardiovascular development. Inhibits myoblast differentiation. Enhances fibroblast growth factor-induced angiogenesis (in vitro).

Gene ID:

JAG1

Uniprot

P78504

Synonyms:

Protein jagged-1 (Jagged1) (hJ1) (CD antigen CD339), JAG1, JAGL1

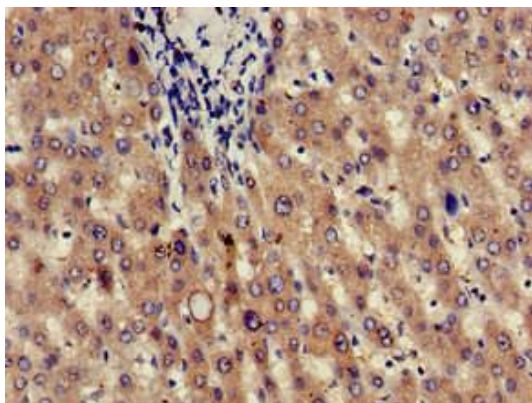
Immunogen:

Recombinant Human Protein jagged-1 protein (809-1046AA).

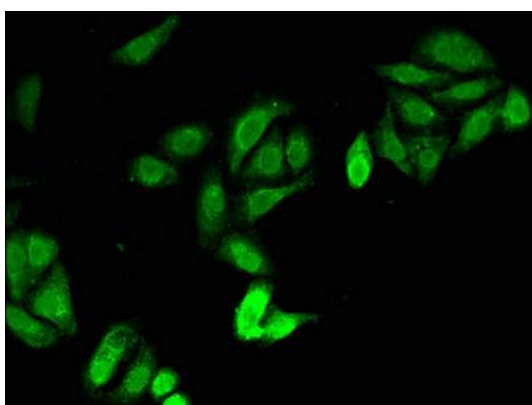
Storage:

Preservative: 0.03% Proclin 300. Constituents: 50% Glycerol, 0.01M PBS, pH 7.4

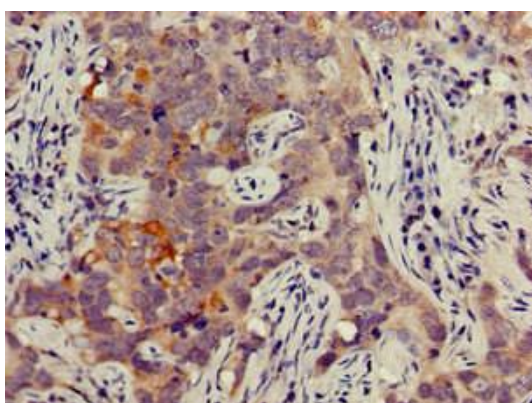
Product Images



Immunohistochemistry of paraffin-embedded human liver tissue using PACO49938 at dilution of 1:100.



Immunofluorescent analysis of HepG2 cells using PACO49938 at dilution of 1:100 and Alexa Fluor 488-conjugated AffiniPure Goat Anti-Rabbit IgG(H+L).



Immunohistochemistry of paraffin-embedded human pancreatic cancer using PACO49938 at dilution of 1:100.