

RPS6KA5 Antibody



PACO49990

Product Information

Size:

50ug

Reactivity:

Human, Mouse, Rat

Source:

Rabbit

Isotype:

IgG

Applications:

ELISA, WB, IHC, IF

Recommended dilutions:

ELISA:1:2000-1:10000, WB:1:500-1:5000,
IHC:1:20-1:200, IF:1:50-1:200

Protein Background:**Gene ID:**

RPS6KA5

Uniprot

O75582

Synonyms:

Ribosomal protein S6 kinase alpha-5 (S6K-alpha-5) (EC 2.7.11.1) (90 kDa ribosomal protein S6 kinase 5) (Nuclear mitogen- and stress-activated protein kinase 1) (RSK-like protein kinase) (RSKL), RPS6KA5, MSK1

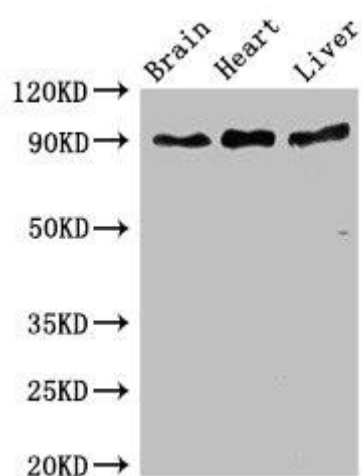
Immunogen:

Recombinant Human Ribosomal protein S6 kinase alpha-5 protein (224-367AA).

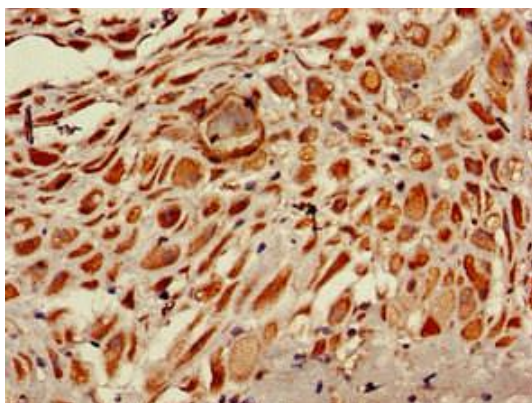
Storage:

Preservative: 0.03% Proclin 300. Constituents: 50% Glycerol, 0.01M PBS, pH 7.4

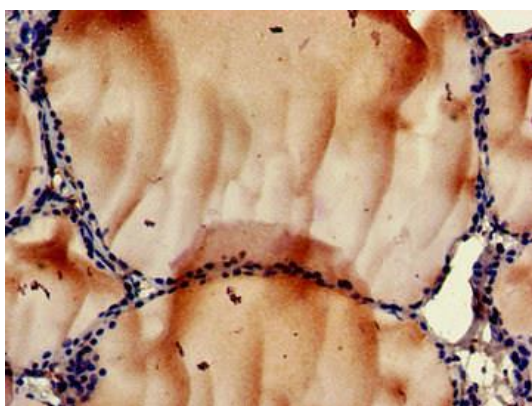
Product Images



Western Blot. Positive WB detected in: Mouse brain tissue, Rat heart tissue, Rat liver tissue. All lanes: RPS6KA5 antibody at 3 μ g/ml. Secondary. Goat polyclonal to rabbit IgG at 1/50000 dilution. Predicted band size: 90, 62, 82 kDa. Observed band size: 90 kDa.



Immunohistochemistry of paraffin-embedded human placenta tissue using PACO49990 at dilution of 1:100.



Immunohistochemistry of paraffin-embedded human thyroid tissue using PACO49990 at dilution of 1:100.